

What are the energy storage power stations in Zambia



Overview

has five large power stations, of which four are and one is. A fifth hydroelectric power plant is under construction at (120MW) along with a coal powered power station at Maamba (300MW) as of 2015. There are also a number of smaller hydroelectric stations, and eight towns not connected to the national power transmission grid are served by diesel generators.

What are the energy storage power stations in Zambia



[Study: Fusion energy could play a major role in the global response to](#)

Investigators in the MIT Energy Initiative and the MIT Plasma Science and Fusion Center have found that - depending on its future cost and performance - fusion energy has the potential

Zambia Power Plants

List of power plants in Zambia from OpenStreetMap



[Explained: Generative AI's environmental impact](#)

MIT News explores the environmental and sustainability implications of generative AI technologies and applications.

[Zambia has grid-connected energy storage power stations](#)

Zambia has five large power stations, of which four are hydroelectric and one is thermal. A fifth hydroelectric power plant is under construction at Itzhi-Tezhi Dam (120MW) along with a coal



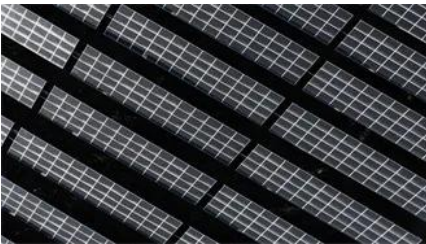
[Giving buildings an "MRI" to make them more energy-efficient and](#)

Founded by a team from MIT, Lamarr.AI utilizes drones, thermal imaging, and AI to identify



SEVERAL ENERGY STORAGE POWER STATIONS IN ZAMBIA

FTMRS SOLAR specializes in photovoltaic power generation, solar energy systems, lithium battery storage, photovoltaic containers, BESS systems, commercial storage, industrial storage, PV



Making clean energy investments more successful

New research emphasizes the importance of well-validated models and forecasting tools in evaluating choices for investments in clean energy technologies and policies by governments and



energy waste and structural issues in buildings and recommend retrofits.



Physiologically based pharmacokinetic (PBPK) modeling of BDE-209

This study has established two oral permeability-limited PBPK models of BDE-209 without enterohepatic recirculation (EHR) (model 1) and with EHR (model 2) for Chinese population. Using



How artificial intelligence can help achieve a clean energy future

A look at how AI can be used to help support the clean energy transition by helping to manage power grid operations, plan infrastructure investments, guide the development of novel

[SEVERAL ENERGY STORAGE POWER STATIONS IN ZAMBIA](#)

In this blog, we explore the two primary types of pump storage systems: open-loop and closed-loop, and discuss their significance in the energy landscape, particularly for industries like green hydrogen



[Next-generation geothermal energy: Promise, progress, and challenges](#)

Geothermal energy, a clean, continuous energy source accessible in many locations, has been slow to catch on. Nearly 2,000 years ago, the Romans made extensive use of geothermal

Energy Sector - Ministry of Energy

Zambia's energy resources include electricity (hydropower), petroleum, coal, biomass and renewable energy. It is only petroleum which is wholly imported in the country.



[bde Encodes the MADS Box Transcription Factor ZAG3. . Download](#)

MADS-box genes, as crucial regulatory factors, play pivotal roles in modulating plant developmental processes (Thompson et al., 2009; Yu et al., 2014b) and mediating hormone regulation and

[MIT engineers create an energy-storing supercapacitor from ancient](#)

MIT engineers created a carbon-cement supercapacitor that can store large amounts of

energy. Made of just cement, water, and carbon black, the device could form the basis for



Cooma Solar - GEI POWER

Located in the Choma District near ZESCO's Muzuma substation in the Chifwepa/Gamela area, the Cooma Solar plant is Zambia's first grid

List of power stations in Zambia

Zambia has five large power stations, of which four are hydroelectric and one is thermal. A fifth hydroelectric power plant is under construction at Itezhi-Tezhi Dam (120MW) along with a coal powered power station at Maamba (300MW) as of 2015. There are also a number of smaller hydroelectric stations, and eight towns not connected to the national power transmission grid are served by diesel generators.



[A new approach could fractionate crude oil using much less energy](#)

MIT engineers developed a membrane that filters the components of crude oil by their molecular size, an advance that could dramatically reduce the amount of energy needed for crude oil

[Parameter Estimation in a Simplified MWD Model for HDPE Produced](#)

Abstract A simplified steady-state model to predict MWDs of ethylene/butene and ethylene/hexene copolymers produced industrially using heterogeneous Z-N catalysts is



developed.



[The power of classic maize mutants: Driving forward our fundamental](#)

From testing the Mendelian laws of inheritance, to the first genetic and cytogenetic maps, to the use of whole-genome sequencing data for crop improvement, maize is at the forefront of genetics advances.

[Where Is the Lusaka Energy Storage Power Station Built? Key](#)

Discover the strategic location, technical specifications, and transformative impact of the Lusaka Energy Storage Power Station. Learn how this project aligns with Zambia's renewable energy goals and



Evelyn Wang: A new energy source at MIT

As MIT's first vice president for energy and climate, Evelyn Wang is working to broaden MIT's research portfolio, scale up existing innovations, seek new breakthroughs, and channel

[Understanding biophysicochemical interactions at the nano](#)

At the interface between nanomaterials and biological systems, the organic and synthetic worlds merge into a new science concerned with the safe use of nanotechnology and nanomaterial





pc067751 2578..2590

We cloned bde by positional cloning and found that it encodes *zea agamous3* (*zag3*), a MADS box transcription factor in the conserved AGAMOUS-LIKE6 clade.

[bearded-ear Encodes a MADS Box Transcription Factor Critical for](#)

Thus, the ABCDE model provides a framework for the molecular regulation of floral development in grasses, but more genes need to be identified and characterized to understand how



[\(PDF\) bearded-ear Encodes a MADS Box Transcription](#)

In addition, BDE and ZAG1 physically interact. We propose a model in which BDE functions in at least three distinct complexes to regulate floral development in the maize ear.

[MIT Energy Initiative conference spotlights research](#)

At the MIT Energy Initiative's Annual Research Conference, industry leaders agreed collaboration is key to advancing critical technologies amidst a changing energy landscape.



[Zambia shared energy storage power station](#)

The concept of "shared energy storage" has been proposed by scholars at home and abroad to reduce the construction costs and enhance utilization (Dai et al., 2021, Asri et al., 2023). Current research on

[Thompson, E.R. \(2009\) Individual Entrepreneurial Intent Construct](#)

ABSTRACT: The current paper contributes to the entrepreneurial intention (EI) literature by applying the theory of planned behaviour (TPB) in a developing African country with unique socio-economic and



[List of power stations in Zambia - Gropedia](#)

Diesel power stations in Zambia primarily serve off-grid rural areas, providing essential electricity for electrification in remote towns where grid extension is uneconomical.

[BDE and ZAG1 Protein Interactions . Download Scientific Diagram](#)

BDE interacts with the C class protein ZAG1 to promote FM determinacy and likely interacts with B and C class proteins to regulate floral organ development.



Contact Us

For off-grid system quotes, technical support, or partnerships, please visit:
<https://kephamatraining.co.za>