

Technology of using wind resistance to generate electricity



Overview

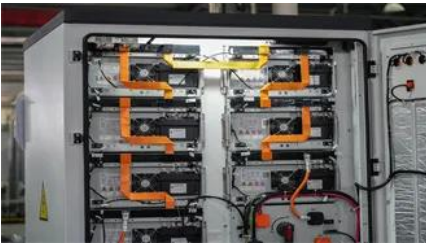
Wind turbines use blades to collect the wind's kinetic energy. Wind flows over the blades creating lift (similar to the effect on airplane wings), which causes the blades to turn.

Technology of using wind resistance to generate electricity



Innovation in clean energy from man-made wind and

This work focuses on using artificially generated wind gusts to transform them into clean electricity through small wind turbines.



Electricity generation from wind

Wind turbines use blades to collect the wind's kinetic energy. Wind flows over the blades creating lift (similar to the effect on airplane wings), which causes the blades to turn. The blades are

How Do Wind Turbines Work?

Wind turbines work on a simple principle: instead of using electricity to make wind-like a fan-wind turbines use wind to make electricity. Wind turns the propeller-like blades of a turbine around a rotor,



How Wind Turbines Generate Power - From Blade to Grid

These systems use real-time data, automated controls, and distributed storage to ensure that wind-generated electricity flows efficiently and reliably from turbine to consumer.



How A Wind Turbine Can Be Used To Produce Electricity



[Wind Energy Technologies: A Complete review of the Wind](#)

The historical development of wind energy is discussed, highlighting key milestones and technological advancements. Various wind turbine technologies are examined, including horizontal-axis and

A wind turbine is a device that converts the kinetic energy of wind into electrical energy. As of 2020, hundreds of thousands of wind turbines have been installed worldwide, providing a clean



[How Does Wind Energy Work: Complete Guide to Wind Power Technology](#)

Learn how wind energy works with our comprehensive guide covering wind turbine technology, energy conversion, and renewable power generation. Updated 2025.

[Recent technology and challenges of wind energy generation: A review](#)

The wind drives the blades to revolve, which activates the generator, which converts the wind force into electricity. Because wind speed rises with height, a tower's height is critical for turbines.



[How Do Wind Turbines Generate Electricity? Step-by-Step Guide](#)

How does windmill electricity work exactly? Let's look at it step by step, reviewing the aerodynamics of wind turbines, their major components, innovations, and even how wind industry leaders, KP Energy,

UNIT II

Wind Turbines: In contrast to windmills, modern wind turbines are highly evolved machines with more than 8,000 parts that harness wind's kinetic energy and convert it into electricity.



Contact Us

For off-grid system quotes, technical support, or partnerships, please visit:
<https://kephamatraining.co.za>