

Solar photovoltaic panel placement specifications



Higher conversion efficiency

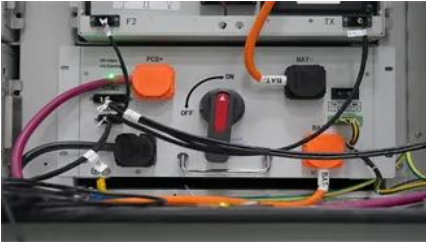
20Kwh

30Kwh

Overview

The complete step-by-step process from site prep to customer handover - including IEC 62446 commissioning requirements, torque specs, and documentation checklist. For more on the full installation workflow, see our solar panel installation guide.

Solar photovoltaic panel placement specifications



[Solar Panel Array Layout: Optimizing Your Solar PV System](#)

Optimize your solar panel array layout for maximum efficiency. Learn about key components and factors to consider in our expert guide.

[Solar Panel Installation Made Simple: Your Step-by-Step Layout](#)

Throughout this guide, we've covered the essential components of a solar panel system, proper placement considerations, and step-by-step installation procedures.



[Solar PV Labeling Requirements: NEC 690 Complete Guide](#)

Service panel power source directory - "CAUTION: MULTIPLE SOURCES OF POWER" per NEC 705.10 This guide covers every label location, exact wording, format requirements, NEC

[Solar Design Layout Basics: Complete Guide for Better Performance](#)

A solar design layout defines how panels are positioned on a roof or ground system to maximize energy production and long-term performance. An effective layout considers orientation,





[Building Codes for Solar Panel Installation](#)

In this article, we'll dive deep into the ins and outs of building codes for solar panel installation, covering everything from structural integrity and

[Solar Label Placement Guide , NEC PV Label Requirements & Diagrams](#)

Learn where to place solar labels with this NEC placement guide. Includes PV label diagrams, part numbers, and placement references for installers.



[Solar Photovoltaic: SPECIFICATION, CHECKLIST AND GUIDE](#)

Builders that intend to meet both the solar PV and solar water heating RERH specifications should detail the location and the square footage of the roof area to accommodate both technologies.

[How to Optimize Solar Panel Placement for Maximum Efficiency](#)

This guide will cover key factors that influence solar panel placement, including orientation, tilt angle, shading considerations, and installation best practices.



[Solar Panel Placement Tool - Roof Layout & Panel Count Calculator](#)

This interactive tool helps you visualize and design your solar panel layout on your roof or property, taking into account available space,

roof orientation, and panel dimensions.

pvgis

Whether you're planning a DIY solar installation or hiring professionals, you'll discover the essential techniques, costs, and regulations needed to successfully install photovoltaic systems



[Solar Panel Direction & Orientation: 2025 Complete Guide](#)

Discover the optimal direction and angle for solar panels to maximize energy output. Complete guide with calculations, tools, and location-specific recommendations for 2025.

[Solar Panel Installation Process: 10-Step Guide , SurgePV](#)

The complete 10-step solar panel installation process: site prep, mounting, wiring, inverter setup, earthing, IEC 62446 commissioning, and customer handover.



[Solar Panel Layout Design: Step-by-Step Guide , SurgePV](#)

Design solar panel layouts in 8 steps. Covers setbacks, orientation, shade analysis, stringing, and proposals.

Contact Us

For off-grid system quotes, technical support, or partnerships, please visit:
<https://kephamatraining.co.za>