

# Power storage systems factory



## Overview

---

The Moss Landing Power Plant is a powered generation plant as well as a , located in , United States, at the midpoint of. As of 2025 , the site's battery storage facility is one of the largest in the world, at 630 MW () and 2,500 MWh (). The energy storage facility stores excess electricity (usually lower-price du.

## Power storage systems factory

---

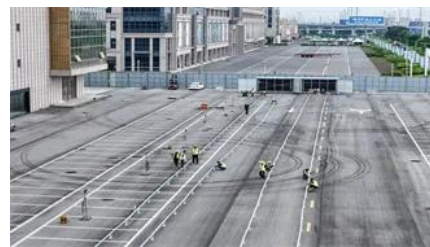


### Adara Power

Adara Power has created and deployed behind the meter energy storage systems managed by its iC3 software platform = intelligence, controls,

### [Power BI: excluding a visual from a slicer](#)

On the Power BI Desktop menu, select the Format menu under Visual Tools, and then select Edit interactions. You need to have the slicer selected. Only then you see the according Filter



### EnerShed (BESS)

Myers Emergency & Power Systems was proud to welcome Congressman Mackenzie to our Battery Energy Storage System (BESS) manufacturing facility

### [How to force Power BI service to use Local timezone](#)

Both approaches work OK in Power BI desktop report, However once I published to Power BI service and after several refreshes (initially it was NZ time), the time turn back to UTC time. I don't



### [California battery plant is among world's largest as](#)



Battery projects in the hundreds of megawatts are becoming more common. Such large systems exist or are under development in California,

## **formatDateTime in Power Automate Desktop**

You are confusing Power Automate with Power Automate Desktop. The link you provide is for Power Automate, so those functions won't work in the PADesktop. There is an action named



## [Power Automate - Some SharePoint List Columns Not Appearing in](#)

I'm working on a Power Automate flow that updates items in a SharePoint Online list. However, I'm facing an issue where certain columns (including Person/Group fields) are not

## [How to Read CSV file using Power Automate?](#)

You can retrieve the contents of the CSV file using the Get file content action in Power Automate/Microsoft Flow, and then using the Parse CSV action to transform the file contents into a



## **Antora - Home**

Antora builds and deploys thermal energy storage to power always-on industrial operations with low

## [Extract Value from Array in Power Automate](#)

Extract Value from Array in Power Automate  
Asked 1 year, 5 months ago Modified 1 year ago  
Viewed 8k times



## [Power Query code to refer to another query \(and how buffering works\)](#)

Is this just part of the building process? Or If I have one query A that loads across the network and 5 follow up queries that refer to query A will power query / excel be reading the across

## Power Automate

I signed out and in multiple times in "power automate". I also opened the "sharepoint app" in Office365 (whatever you're supposed to do with it) which worked fine. The sharepoint connector in



## [Top 10 energy storage manufacturers in USA](#)

The article will mainly explore the top 10 energy storage manufacturers in USA including Tesla, Enphase Energy, Fluence Energy, GE

## [Top 24 Energy Storage Companies In California](#)

OverviewHistoryConnections to the California power gridNatural Gas power generationBattery energy storage facilities

The Moss Landing Power Plant is a natural gas powered electricity generation plant as well as a battery energy storage facility, located in Moss



Landing, California, United States, at the midpoint of Monterey Bay. As of 2025 , the site's battery storage facility is one of the largest in the world, at 630 MW (power) and 2,500 MWh (energy). The energy storage facility stores excess electricity (usually lower-price solar electricity du



### [Factory-direct Battery Energy Storage Systems , Solara](#)

Solara Power delivers factory-direct battery energy storage systems with backup power, local service, and reliable warranty support.

### [How do I refresh an Excel Power Query using Power Automate Online?](#)

0 I have data being pulled from a SharePoint list to an Excel file and I'm trying to use Power Automate online to create a scheduled flow that will trigger the "Refresh All" button for Power



### [Running Python scripts in Microsoft Power Automate Cloud](#)

I use Power Automate to collect responses from a Form and send emails based on the responses. The main objective is to automate decision-making using Python to approve or reject the

## Contact Us

---

For off-grid system quotes, technical support, or partnerships, please visit:  
<https://kephamatraining.co.za>