

# Power distribution solution for 5G base station in Kinshasa



**2MW / 5MWh**  
**Customizable**



## Power distribution solution for 5G base station in Kinshasa

---



### ENERGY MANAGEMENT STRATEGY FOR DISTRIBUTED

Base station operators deploy a large number of distributed photovoltaics to solve the problems of high energy consumption and high electricity costs of 5G base stations.

### Tender for Kinshasa 5G base station communication project

DRC KINSHASA PLANS TENDER CALLS FOR 19 MINI POWER Base station operators deploy a large number of distributed photovoltaics to solve the problems of high energy consumption and high



### Low-Power Design Strategies for 5G Base Stations

3. Deploy renewable energy at base stations  
Operators can deploy solar, wind, and other renewable sources to power base stations, providing a sustainable energy supply. This reduces

### Running Python scripts in Microsoft Power Automate Cloud

I use Power Automate to collect responses from a Form and send emails based on the responses. The main objective is to automate decision-making using Python to approve or reject the





### [Extract Value from Array in Power Automate](#)

Extract Value from Array in Power Automate  
Asked 1 year, 5 months ago Modified 1 year ago  
Viewed 7k times

### [Distribution network restoration supply method considers 5G base](#)

This work explores the factors that affect the energy storage reserve capacity of 5G base stations: communication volume of the base station, power consumption of the base station, backup



### [Power Query code to refer to another query \(and how buffering works\)](#)

Is this just part of the building process? Or If I have one query A that loads across the network and 5 follow up queries that refer to query A will power query / excel be reading the across



### [Power Automate - Some SharePoint List Columns Not Appearing in](#)

I'm working on a Power Automate flow that updates items in a SharePoint Online list. However, I'm facing an issue where certain columns (including Person/Group fields) are not



### [Telecom Power-5G power, hybrid and iEnergy network](#)

ZTE's Telecom Power solutions mainly includes: 5G power supply, hybrid energy and iEnergy network energy management solutions to fully



meet the needs of

## **formatDateTime in Power Automate Desktop**

You are confusing Power Automate with Power Automate Desktop. The link you provide is for Power Automate, so those functions won't work in the PADesktop. There is an action named



## [5G Base Station Power Supply with Battery & DC Distribution](#)

This 5G base station power supply system integrates battery backup, DC power distribution, and advanced control modules to ensure reliable energy support for critical telecom infrastructure.

## [Power BI: excluding a visual from a slicer](#)

On the Power BI Desktop menu, select the Format menu under Visual Tools, and then select Edit interactions. You need to have the slicer selected. Only then you see the according Filter



## **power automate**

The file should be available in "C:\Program Files (x86)\Power Automate Desktop" s I can see PADnsole.Host.exe in the mentioned folder. Other way of making sure you are checking in

## [How to force Power BI service to use Local timezone](#)

Both approaches work OK in Power BI desktop

report, However once I published to Power BI service and after several refreshes (initially it was NZ time), the time turn back to UTC time. I don't

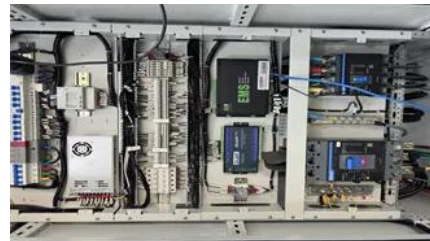


### [Congo Kinshasa communication base station wind power and](#)

This paper investigates the possibility of using a hybrid Photovoltaic-Wind power system to supply Base Transceiver Station load in the Democratic Republic of Congo.

### **Power Automate**

I signed out and in multiple times in "power automate". I also opened the "sharepoint app" in Office365 (whatever you're supposed to do with it) which worked fine. The sharepoint connector in



### [Smart Power MOSFET Selection Solution for High-End 5G](#)

With the rapid deployment of 5G networks and increasing demands for high-speed, low-latency connectivity, high-end 5G communication base stations have become critical infrastructure for

### [5g Base Station Power Supply With Battery Amp Dc Distribution](#)

This paper proposes a distribution network fault emergency power supply recovery strategy based on 5G base station energy storage. This strategy introduces Theil's entropy and modified Gini coef.





## [How to Read CSV file using Power Automate?](#)

You can retrieve the contents of the CSV file using the Get file content action in Power Automate/Microsoft Flow, and then using the Parse CSV action to transform the file contents into a

## Contact Us

---

For off-grid system quotes, technical support, or partnerships, please visit:  
<https://kephamatraining.co.za>