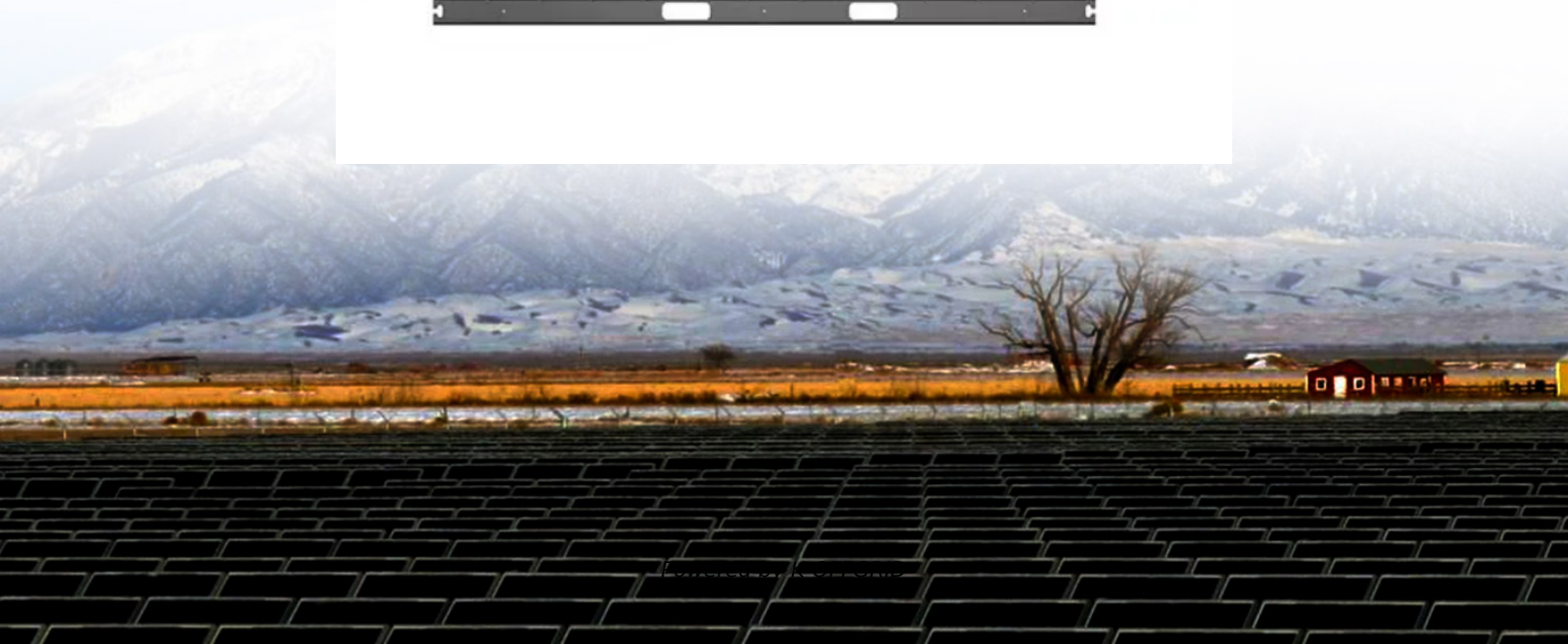
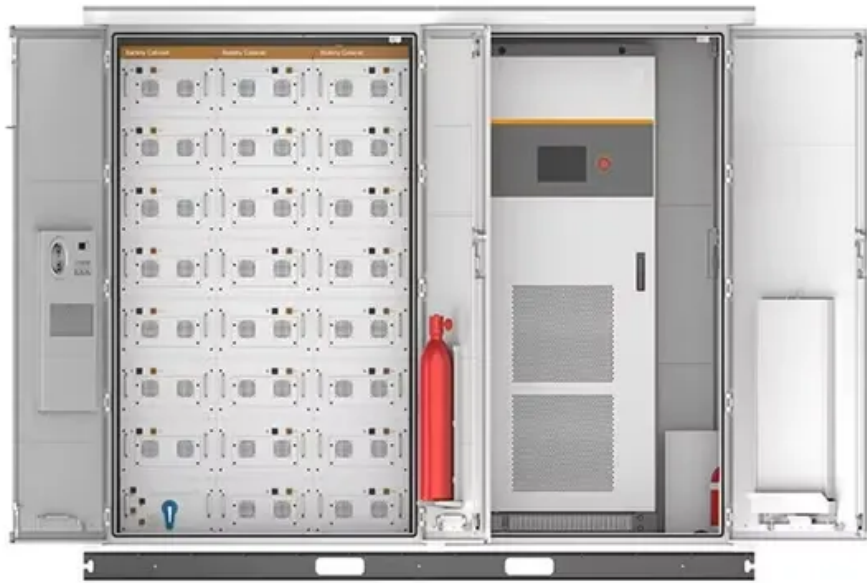


# **Power consumption of photovoltaic power generation for outdoor communication base stations**



## Overview

---

This paper presents an optimal method for designing a photovoltaic (PV)-battery system to supply base stations in cellular networks.

## Power consumption of photovoltaic power generation for outdoor c

---



### [Extract Value from Array in Power Automate](#)

Extract Value from Array in Power Automate  
Asked 1 year, 5 months ago Modified 1 year ago  
Viewed 8k times

### [Power Query code to refer to another query \(and how buffering works\)](#)

Is this just part of the building process? Or If I have one query A that loads across the network and 5 follow up queries that refer to query A will power query / excel be reading the across



### [How to Read CSV file using Power Automate?](#)

You can retrieve the contents of the CSV file using the Get file content action in Power Automate/Microsoft Flow, and then using the Parse CSV action to transform the file contents into a

### [How to force Power BI service to use Local timezone](#)

Both approaches work OK in Power BI desktop report, However once I published to Power BI service and after several refreshes (initially it was NZ time), the time turn back to UTC time. I don't





## [Power Automate - Some SharePoint List Columns Not Appearing in](#)

I'm working on a Power Automate flow that updates items in a SharePoint Online list. However, I'm facing an issue where certain columns (including Person/Group fields) are not

## **formatDateTime in Power Automate Desktop**

You are confusing Power Automate with Power Automate Desktop. The link you provide is for Power Automate, so those functions won't work in the PADesktop. There is an action named



## [Telecom Base Station PV Power Generation System Solution](#)

The power generated by solar energy is used by the DC load of the base station computer room, and the insufficient power is supplemented by energy storage devices. Install solar panels outdoors and

## [Solar Power Plants for Communication Base Stations: The Future of](#)

Meta description: Discover how solar power plants are revolutionizing communication base stations with 40% cost savings and 24/7 reliability. Explore real-world case studies, technical



## [\(PDF\) Design of Solar System for LTE Networks](#)

This article discusses the importance of using solar panels to produce energy for mobile

stations and also a solution to some environmental problems

### [Running Python scripts in Microsoft Power Automate Cloud](#)

I use Power Automate to collect responses from a Form and send emails based on the responses. The main objective is to automate decision-making using Python to approve or reject the

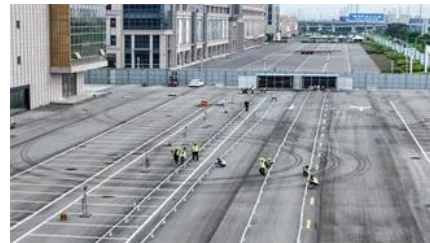


### **Power Automate**

I signed out and in multiple times in "power automate". I also opened the "sharepoint app" in Office365 (whatever you're supposed to do with it) which worked fine. The sharepoint connector in

### **power automate**

The file should be available in "C:\Program Files (x86)\Power Automate Desktop" s I can see PAD nsole.Host.exe in the mentioned folder. Other way of making sure you are checking in



### [Power BI: excluding a visual from a slicer](#)

On the Power BI Desktop menu, select the Format menu under Visual Tools, and then select Edit interactions. You need to have the slicer selected. Only then you see the according Filter

### [Optimum Sizing of Photovoltaic and Energy Storage Systems for](#)

Renewable energy sources are a promising solution to power base stations in a self-sufficient and cost-effective manner. This paper presents an optimal method for designing a photovoltaic (PV)-battery



### [Analysis of photovoltaic power consumption in communication](#)

Cellular base stations powered by renewable energy sources such as solar power have emerged as one of the promising solutions to these issues. This article presents an overview of the state-of-the-art in

### [Power Consumption Assessment of Telecommunication Base Stations](#)

We introduce five base station energy models for the state-of-the-art EnergyPlus simulator, and we present the development of an OpenStudio Measure for the parameterization of



### [PV Energy Generation and IoT Power Consumption for Telecom](#)

In such context, this work aims to adopt an appropriate PV-based energy generation system feeding a remote telecom network (RTN), via evaluating its performance, and monitor a

### [Optimum sizing and configuration of electrical system for](#)

This study develops a mathematical model and investigates an optimization approach for optimal sizing and deployment of solar photovoltaic (PV), battery bank storage and a diesel





### [Short-term power forecasting method for 5G](#)

The proposed SDN-PVBS framework specifically addresses power fluctuations in 5G photovoltaic base stations through precise photovoltaic

## Contact Us

---

For off-grid system quotes, technical support, or partnerships, please visit:  
<https://kephamatraining.co.za>