

# Power cabinet for photovoltaic power station AC DC integrated



## Power cabinet for photovoltaic power station AC DC integrated

---

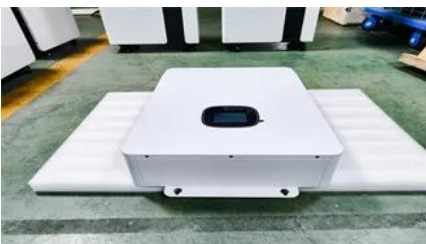


### [How to Read CSV file using Power Automate?](#)

You can retrieve the contents of the CSV file using the Get file content action in Power Automate/Microsoft Flow, and then using the Parse CSV action to transform the file contents into a

### [How to force Power BI service to use Local timezone](#)

Both approaches work OK in Power BI desktop report, However once I published to Power BI service and after several refreshes (initially it was NZ time), the time turn back to UTC time. I don't



### [HT Cabinet Type AC DC Power Supply Module System Introduction](#)

The integrated photovoltaic and storage cabinet is connected to batteries, photovoltaics or other DC sources, and converted to AC power through AC/DC power modules to power local loads.

### [40kW DC200V~750V AC/DC off grid energy storage](#)

Application: Suitable for small and medium-sized industrial and



### [BESS: Battery Energy Storage System .](#)



## Generac

Equipped with integration controls for solar PV and generators. Backup power-ready and designed to support onsite load during grid outages. Virtual power

## **Power Automate**

I signed out and in multiple times in "power automate". I also opened the "sharepoint app" in Office365 (whatever you're supposed to do with it) which worked fine. The sharepoint connector in



## Power Query code to refer to another query (and how buffering works)

Is this just part of the building process? Or If I have one query A that loads across the network and 5 follow up queries that refer to query A will power query / excel be reading the across

## **power automate**

The file should be available in "C:\Program Files (x86)\Power Automate Desktop" s I can see PAD nsole.Host.exe in the mentioned folder. Other way of making sure you are checking in



## **formatDateTime in Power Automate Desktop**

You are confusing Power Automate with Power Automate Desktop. The link you provide is for Power Automate, so those functions won't work in the PADesktop. There is an action named

## [Power Automate - Some SharePoint List Columns Not Appearing in](#)

I'm working on a Power Automate flow that updates items in a SharePoint Online list. However, I'm facing an issue where certain columns (including Person/Group fields) are not



## [Running Python scripts in Microsoft Power Automate Cloud](#)

I use Power Automate to collect responses from a Form and send emails based on the responses. The main objective is to automate decision-making using Python to approve or reject the

## [Extract Value from Array in Power Automate](#)

Extract Value from Array in Power Automate  
Asked 1 year, 5 months ago Modified 1 year ago  
Viewed 7k times



## [Power Station - Complete Ground-Mounted System](#)

SunWize Power Stations are complete, integrated solar power systems designed for site loads requiring 12/24/48VDC or 110V-240V, 50Hz/60Hz AC voltage.

## [Power BI: excluding a visual from a slicer](#)

On the Power BI Desktop menu, select the Format menu under Visual Tools, and then select Edit interactions. You need to have the slicer selected. Only then you see the according Filter





### [Photovoltaic Micro-station Energy Cabinet](#)

It combines different power inputs (small wind turbines, solar PV panels, and AC/DC rectifier) with an internal lithium-ion battery for backup, network

## Contact Us

---

For off-grid system quotes, technical support, or partnerships, please visit:  
<https://kephamatraining.co.za>