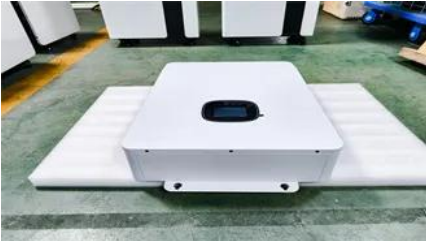


Power Storage Cabinet 1200mm Deep System Integration



Power Storage Cabinet 1200mm Deep System Integration



Error when Refreshing Power BI Gateway

I have been experiencing a periodic refresh issue with multiple BI reports currently sitting on service. These are using gateways to pull data from either/or Analysis services or via a direct SQL

Cable Management

Our vast selection of cabinets, thermal management, racks, enclosures for data centers, telecommunications equipment rooms, and enterprise cabling



Galaxy Lithium-ion Battery Cabinet

o The battery cabinet contains an internal energy source. Hazardous voltage can be present even when the UPS system is disconnected from the utility/ mains supply. Before installing or servicing the UPS

Power Automate

I signed out and in multiple times in "power automate". I also opened the "sharepoint app" in Office365 (whatever you're supposed to do with it) which worked fine. The sharepoint connector in



[Power Query code to refer to another](#)



[query \(and how buffering works\)](#)

Is this just part of the building process? Or If I have one query A that loads across the network and 5 follow up queries that refer to query A will power query / excel be reading the across

[Dell PowerEdge 2420, 4220, and 4820 rack enclosures](#)

Deep (1200mm) racks offer more space in the back for cables and PDUs for high-density installations. The 4820D and 4220D racks have extended PDU trays in the back of the rack, which can hold up to



[Extract Value from Array in Power Automate](#)

Extract Value from Array in Power Automate
Asked 1 year, 5 months ago Modified 1 year ago
Viewed 8k times

formatDateTime in Power Automate Desktop

You are confusing Power Automate with Power Automate Desktop. The link you provide is for Power Automate, so those functions won't work in the PADesktop. There is an action named



[Modular energy storage cabinet for charging stations 1200mm deep](#)

Get technical specifications, product datasheets, and installation guides for our solar and storage solutions, including PV systems, container power stations, energy storage cells, battery

ZetaFrame(R) Cabinet

Configure your enclosure with factory-installed accessories to speed deployment. A highly engineered data center cabinet solution that delivers fast built-to-order



[How to Read CSV file using Power Automate?](#)

You can retrieve the contents of the CSV file using the Get file content action in Power Automate/Microsoft Flow, and then using the Parse CSV action to transform the file contents into a

IBM 42U 1200 mm Deep Racks

Receive your System x and BladeCenter solutions fully integrated in the rack and ready to instantly deploy in the IBM 42U 1200 mm Deep Dynamic Rack.



[Aze 48u 600mm Wide X 1200mm Deep Colocation Rack Enclosure](#)

With over 10 years of industry experience, AZE is a professional manufacturer and supplier specializing in data center infrastructure solutions and Battery Energy Storage Systems (BESS).

[Power Automate - Some SharePoint List Columns Not Appearing in](#)

I'm working on a Power Automate flow that updates items in a SharePoint Online list. However, I'm facing an issue where certain



columns (including Person/Group fields) are not



[Get email categories in Microsoft Power Automate](#)

But in Power Automate, if I use the "Send an HTTP Request" action (under "Office 365 Outlook") and send a request to that same endpoint, it returns a lot of the message information but

[BESS , Power-Sonic Battery Energy Storage Systems](#)

All-in-one cabinet energy storage systems engineered for small businesses and network power applications, these compact units integrate batteries, inverters,



power automate

I am writing a Power automate to copy emails from an Outlook mailbox to SharePoint. I am using Get emails (V3) and want to retrieve emails received on a particular date.

[Vertiv\(TM\) EnergyCore Lithium-Ion Battery Cabinets](#)

With advanced BMS intelligence for precise State of Charge (SoC) and State of Health (SoH) tracking, these battery cabinets simplify installation, reduce



[APC AR3307SP NetShelter SX 48U 600mm Wide 1200mm Deep](#)



NetShelter SX cabinet and packaging system designed to safely integrate, transport, unload and deploy up to 2000 lbs (907 kg) of IT equipment. The cabinet is paired with a shock absorbing pallet,

power automate

The file should be available in "C:\Program Files (x86)\Power Automate Desktop" s I can see PAD nsole.Host.exe in the mentioned folder. Other way of making sure you are checking in



Contact Us

For off-grid system quotes, technical support, or partnerships, please visit:
<https://kephamatraining.co.za>