

Photovoltaic support energy



Overview

We use solar thermal energy systems to heat: Solar photovoltaic (PV) devices, or solar cells, convert sunlight directly into electricity. Small PV cells can power calculators, watches, and other small electronic devices.

Photovoltaic support energy



[A review of solar photovoltaic technologies: developments, challenges](#)

Solar photovoltaic (PV) technology has emerged as a key renewable energy solution, yet its widespread adoption faces several technical and economic challenges.

Seattle

January weather in Seattle for each year since 2010 including high and low temperatures, total snowfall and precipitation.



[Seattle, WA Monthly Weather , AccuWeather](#)

Get the monthly weather forecast for Seattle, WA, including daily high/low, historical averages, to help you plan ahead.



Solar explained

Solar photovoltaic (PV) devices, or solar cells, convert sunlight directly into electricity. Small PV cells can power calculators, watches, and other small electronic devices.



[Solar Photovoltaic: Everything You Should Know](#)

What is a solar photovoltaic (PV) system? A solar



PV system is a technology that converts sunlight directly into electricity using the photovoltaic effect.

[Seattle \(WA\) Weather in January: Temperature & Rainfall](#)

Browse day-by-day weather records for Seattle spanning 51 years. Select any month and year to see actual temperatures, rainfall, and conditions recorded on each day.



[January Weather in Seattle Washington, United States](#)

The average sliding 31-day snowfall during January in Seattle is decreasing, starting the month at 1.8 inches, when it rarely exceeds 6.4 inches or falls below -0.0 inches, and ending the month at 0.6

Photovoltaics and electricity

A photovoltaic (PV) cell, commonly called a solar cell, is a nonmechanical device that converts sunlight directly into electricity. Some PV cells can convert artificial light into electricity. Sunlight is composed



[What Are Photovoltaics? \(2026\) , ConsumerAffairs\(R\)](#)

Photovoltaic technology lets you generate electricity from a renewable source: the sun. Unlike traditional methods of electricity generation, which often rely on fossil fuels, photovoltaics

Solar Permitting Guidebook 4th Edition

Technical Information Bulletin for Solar PV Systems (on all types of buildings) - Provides consistent and comprehensive information regarding current state requirements for solar

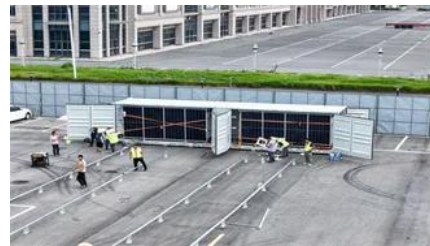


Photovoltaics

Photovoltaics (PV) is the conversion of light into electricity using semiconducting materials that exhibit the photovoltaic effect, a phenomenon studied in physics, photochemistry, and electrochemistry. The

Seattle Snow Report , OnTheSnow

See latest Seattle ski conditions, updated daily with snowfall totals, snow depths, open lifts & terrain for all ski resorts in Seattle.



Photovoltaics , Department of Energy

Photovoltaic (PV) technologies - more commonly known as solar panels - generate power using devices that absorb energy from sunlight and convert it into electrical energy through semiconducting

[A comprehensive review of grid support services from solar](#)

As solar photovoltaic penetration increases, the role of these grid support services becomes ever more critical, requiring innovative solutions, conducive regulatory frameworks, and a





Solar Market Insight Report - SEIA

US Solar Market Insight is a quarterly publication of Wood Mackenzie and the Solar Energy Industries Association (SEIA).

[How Do Solar Cells Work? Photovoltaic Cells Explained](#)

The conversion of sunlight, made up of particles called photons, into electrical energy by a solar cell is called the "photovoltaic effect" - hence why we refer to solar cells as "photovoltaic", or PV



Weather in Seattle in January 2027

Seattle typically experiences moderate snowfall in January, with an average of 6 snowy days. In general, the average temperature in Seattle at the beginning of January is 45 °F. As the month progressed,

Snow Stats

Seattle averages just 6.3 inches of snow a winter, although several winters-especially during the 1950s and 60s-have seen much more. Seattle's official snowfall records were taken at Sea-Tac Airport



[Solar PV, Solar Ready, Battery Energy Storage System](#)

The Building Energy Efficiency Standards (Energy Code) include requirements for solar photovoltaic (PV) systems, solar-ready design, battery energy

storage

PVWatts Calculator

Estimates the energy production and cost of energy of grid-connected photovoltaic (PV) energy systems throughout the world. It allows homeowners, small building owners, installers and manufacturers to



Seattle/Tacoma, WA

NOAA National Weather Service Seattle/Tacoma, WA Hawaii and Guam Concerns; Record Warmth Spreads Eastward; Heavy Snow for Sierra-Nevada; Severe Weather for the Plains A

[Seattle Weather in January: Temperatures & Climate Guide](#)

Seattle weather in January: Expect average highs of 7°C, lows of 2°C, and some rainfall. Includes packing tips and daily averages.



January weather

January is the first month it typically snows. Throughout January, in the average 1.3 snowfall days, it receives 0.12" (3mm) of snow. In Seattle, during the entire year, snow falls for 4.8

Photovoltaic Research , NLR

Our cutting-edge research focuses on boosting solar cell conversion efficiencies; lowering the cost of solar cells, modules, and systems; and improving the reliability of PV components and





Photovoltaics (PV)

Photovoltaic systems work by utilizing solar cells to convert sunlight into electricity. These solar cells are made up of semiconductor materials, such as silicon, that absorb photons from

Contact Us

For off-grid system quotes, technical support, or partnerships, please visit:
<https://kephamatraining.co.za>