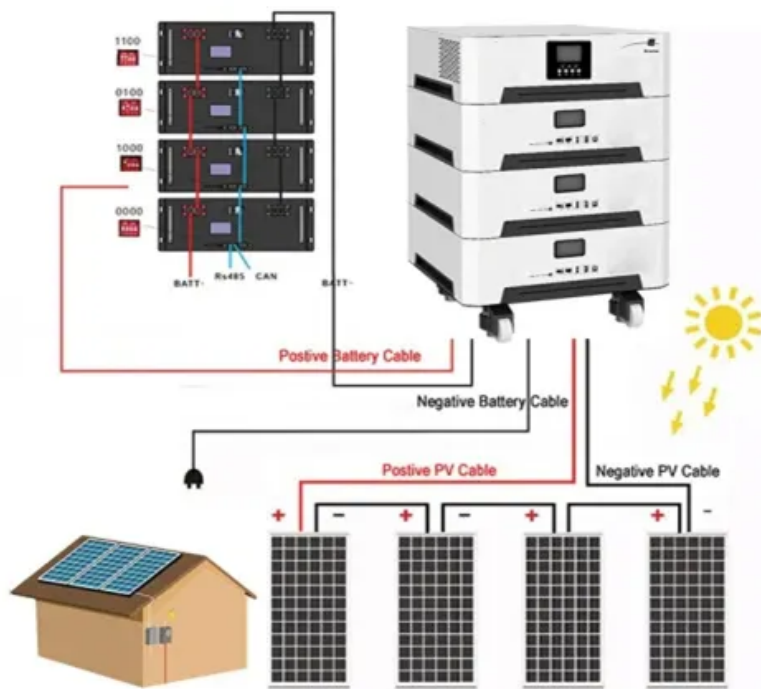


Overkill bms 100a



Overkill bms 100a



Overkill Solar BMS Instruction Manual

For capacity and protection settings, see the individual sections below for your specific battery type. Number of cells: Leave this at the factory default setting that ships with the BMS. 12V BMS: 4 cells

Overkill Solar BMS Instruction Manual

This document provides instructions for building and maintaining battery packs with Overkill Solar BMS systems. It covers safety precautions, planning, assembly,



Overkill Solar - More is Better

Several customers have asked me for instructions on connecting multiple parallel Tesla battery modules to a single Pathfinder BMS. I set up a demonstration on how this could be done, but stumbled upon

Overkill Solar BMS Instruction Manual

When the BMS disconnects for overvoltage, the charger is still active and connected to the rest of the system, possibly resulting in a damaging unregulated voltage spike.





[Overkill BMS question about over current load](#)

I am building an 8S 24v 100AH battery pack with an Overkill 8S 24v 100AH BMS for a "Boulder" model power wheelchair. The pack will replace a pair of 100AH 12v Gel cells in series.

[8s BMS 100a LifePo4 with M6 Threaded Terminals](#)

100 amp continuous charge or discharge current. Low Temperature Charging cutoff at -1c. The Apps allow you to monitor SOC (state of charge), Current, Voltage, cell balance,



[16s BMS 100a for LifePo4 with 12? 8ga Wires](#)

This is best BMS on the market for DIY off-grid power projects. Suitable for DIY LiFePO4 solar storage batteries in RVs, Vans, Marine and stationary applications.

[Overkill BMS and full cell voltage settings?](#)

Cell full voltage is the voltage needed to automatically trigger the BMS to reset to 100%. I would leave the % at the defaults, and simply set cell full voltage appropriate for your charging scheme.



OVERKILL SOLAR 16S100A8GA12 Bms Wires

This BMS comes with a capacity of 100A continuous discharge current, enabling it to effectively monitor, regulate, and balance

batteries in larger solar setups. The system features 16S architecture, which is

[OVERKILL SOLAR BMS SERIES INSTRUCTION MANUAL Pdf](#)

Popular choices are: Overkill Solar sells a stainless steel frame for the 100Ah LiFePO4 batteries. This is arguably the strongest and most durable way to build a battery pack, and would be suitable for



Overkill Solar 8s BMS 100a 24v LifePo4

See all condition definitions Brand Overkill Solar Type 8s bms Amp Hours 100ah, 200ah, 280ah, 310ah Manufacturer Warranty Lifetime Voltage 24 V MPN 8s100Threaded Battery Size LiFePO4 Chemical

Contact Us

For off-grid system quotes, technical support, or partnerships, please visit:
<https://kephamatraining.co.za>