

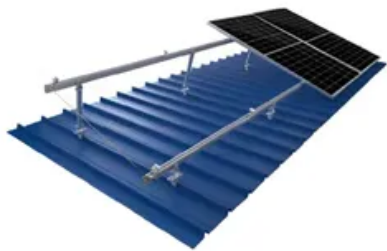
Operational procedures for replacing wind power supply at solar container communication station



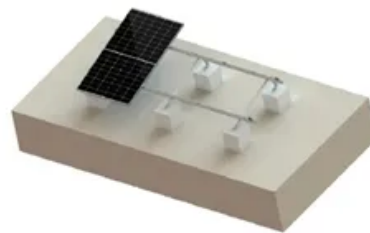
TILE ROOF SOLAR MOUNTING SYATEM



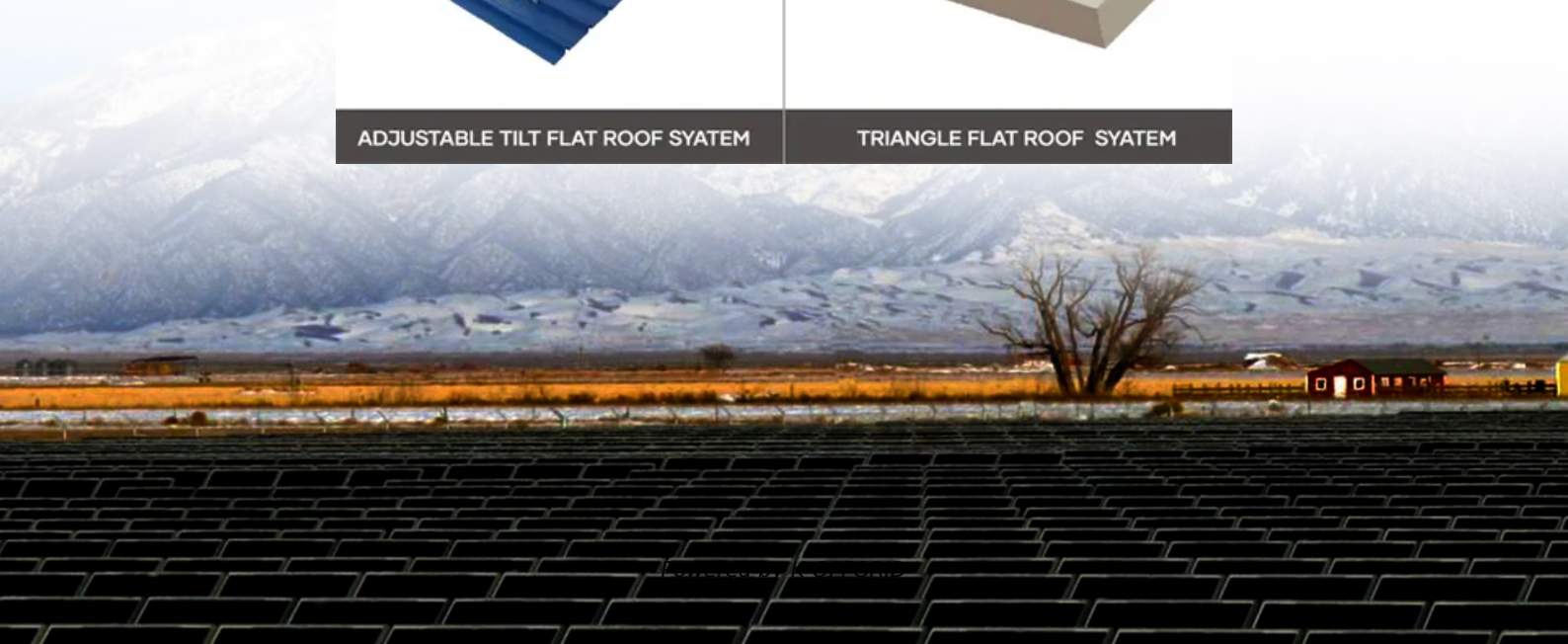
STANDING SEAM ROOF SYSTEM



ADJUSTABLE TILT FLAT ROOF SYATEM



TRIANGLE FLAT ROOF SYSTEM



Overview

This manual addresses why these sorts of boxes are replacing remote power supply, what the components of the whole system are, how to wire and install it safely along with handy facts, industry jargon and best-practice references.

Operational procedures for replacing wind power supply at solar co



[Solar container communication station wind power promotion](#)

Dhaka communication base station wind power equipment installation The objective of these guidelines is to facilitate the development of wind power projects in an efficient, cost effective

[How to connect the solar container communication station wind](#)

This manual addresses why these sorts of boxes are replacing remote power supply, what the components of the whole system are, how to wire and install it safely along with handy facts, industry



[Solar Container Communication Wind Power Related Standards](#)

Browse our articles and resources about solar-co ntainer-communication-wind-power-related-standards for African applications.



[Solar container communication station wind power equipment](#)

Integrated Solar-Wind Power Container for Communications This large-capacity, modular outdoor base station seamlessly integrates photovoltaic, wind power, and energy storage to provide a stable





[Wireless solar container communication station wind and solar](#)

In order to improve the utilization efficiency of wind and photovoltaic energy resources, this paper designs a set of wind and solar complementary power generation

[Replacing Batteries At Seoul Container Communication Stations](#)

This study constructed a multi-energy complementary wind-solar-hydropower system model to optimize the capacity configuration of wind,solar,and hydropower,and analyzed the system's performance



[Solar Operations and Maintenance Resources for Plant Operators](#)

After solar energy arrays are installed, they must undergo operations and maintenance (O&M) to function properly and meet energy production targets over the lifecycle of the solar system and

[Maintenance and installation of wind-solar hybrid equipment for](#)

A globally interconnected solar-wind power system can meet future electricity demand while lowering costs, enhancing resilience, and supporting a stable, sustainable



[Solar container communication station flow battery technology](#)

The rapid proliferation of renewable energy



sources has compounded the complexity of power grid management, particularly in scheduling multiple Battery Energy Storage Systems (BESS).

Contact Us

For off-grid system quotes, technical support, or partnerships, please visit:
<https://kephamatraining.co.za>