

# New energy storage cabinet samples completed



## New energy storage cabinet samples completed

---



### [Inside the new Energy Storage Cabinet from Pylontech](#)

Pylontech's IP55-rated Energy Storage Cabinet adds flexibility and style to your home power system. At \$900 per unit, this cabinet is designed to fit up to 4 Pylontech US5000 batteries for

### What is the 'new' keyword in JavaScript?

The new keyword in JavaScript can be quite confusing when it is first encountered, as people tend to think that JavaScript is not an object-oriented programming language. What is it? What problems



### Land Query

Discover land ownership details with OneMap's Land Query function. Quickly retrieve property information for any land lot in Singapore.

### [How do I push a new local branch to a remote Git repository and track](#)

How do I: Create a local branch from another branch (via git branch or git checkout -b). Push the local branch to the remote repository (i.e. publish), but make it trackable so that git pull and



### QUERY Definition & Meaning ,



## Push local Git repository to new remote including all branches and tags

Whether you push all the branches or just some of them, Git will perform the entire operation without creating any new local branches, and without making changes to your working



## QUERY , English meaning

QUERY definition: 1. a question, often expressing doubt about something or looking for an answer from an authority. Learn more.



## Dictionary

QUERY definition: a question; an inquiry. See examples of query used in a sentence.



## [All-in-One Energy Storage Cabinet & BESS Cabinets , Modular.](#)

Featuring lithium-ion batteries, integrated thermal management, and smart BMS technology, these cabinets are perfect for grid-tied, off-grid, and microgrid applications. Explore reliable, and IEC

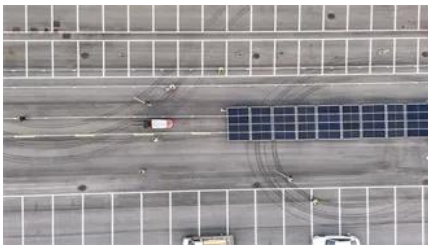


## [How does the new operator work in JavaScript?](#)

The new operator uses the internal [] method, and it basically does the following: Initializes a new native object Sets the internal [] of this object, pointing to the Function prototype

## When to use "new" and when not to, in C++?

You should use new when you wish an object to remain in existence until you delete it. If you do not use new then the object will be destroyed when it goes out of scope.



## How to open link in a new tab in HTML?

Note I previously suggested blank instead of \_blank because, if used, it'll open a new tab and then use the same tab if the link is clicked again. However, this is only because, as GolezTrol

## [Difference between 'new operator' and 'operator new'?](#)

A new expression is the whole phrase that begins with new. So what do you call just the "new" part of it? If it's wrong to call that the new operator, then we should not call "sizeof" the sizeof



## [Move the most recent commit \(s\) to a new branch with Git](#)

A graphical version manager where you would just add a tag for the new branch without dealing with what seems to me obscure and archaic syntax would be such a relief. My kingdom and

## [New site design and philosophy for Stack Overflow: Starting February](#)

Ah, but new experts will rise up and embrace the new, friendly Stack Overflow that they have always wanted. And maybe rediscover the same



things the bitter, hateful old guard found.



### [Create new column based on values from other columns / apply a](#)

For the examples below - in order to show multiple types of rules for the new column - we will assume a DataFrame with columns 'red', 'green' and 'blue', containing floating-point values ranging 0 to 1.

### [Zhejiang Taizhou 2795kWh Energy Storage Cabinet Project](#)

By October 2024, five sites and 13 energy storage cabinets had completed installation and commissioning, with the National Grid's distributed power project successfully passing grid



### [QUERY definition and meaning , Collins English Dictionary](#)

A query is a question, especially one that you ask an organization, publication, or expert.

### **query noun**

Definition of query noun in Oxford Advanced Learner's Dictionary. Meaning, pronunciation, picture, example sentences, grammar, usage notes, synonyms and more.



### **SQL Subquery**

A subquery in SQL is a query nested inside another SQL query. It allows complex filtering,



aggregation and data manipulation by using the result of one query inside another. They are an

## QUERY Definition & Meaning

The meaning of QUERY is question, inquiry. How to use query in a sentence. Synonym Discussion of Query.



## Contact Us

---

For off-grid system quotes, technical support, or partnerships, please visit:  
<https://kephamatraining.co.za>