

New Energy Battery Cabinet Cost Planning



New Energy Battery Cabinet Cost Planning



How to open link in a new tab in HTML?

Note I previously suggested blank instead of _blank because, if used, it'll open a new tab and then use the same tab if the link is clicked again. However, this is only because, as GolezTrol

[Unity: Conflict between new InputSystem and old EventSystem](#)

You probably tried to import a new input system package for multiple input devices compatibility. These type of errors are due to conflict between old and new input system packages



[The Complete BESS Cost Breakdown for 2026:](#)

This guide provides a transparent BESS cost breakdown for 2026, moving beyond module prices to illuminate the full project lifecycle costs, empowering you to

When to use "new" and when not to, in C++?

You should use new when you wish an object to remain in existence until you delete it. If you do not use new then the object will be destroyed when it goes out of scope.



[Battery Cabinet Price Guide: Cost](#)



[Breakdown and Buying Advice](#)

Learn how much a battery cabinet costs, what affects pricing, and how to choose the right battery enclosure or solar battery cabinet for your system.

[New site design and philosophy for Stack Overflow: Starting February](#)

Ah, but new experts will rise up and embrace the new, friendly Stack Overflow that they have always wanted. And maybe rediscover the same things the bitter, hateful old guard found.



[Utility Scale Battery Storage Cost Guide for U.S. Projects 2026](#)

The main cost drivers include system size, energy capacity (MWh), power capacity (MW), chemistry, permitting, and balance-of-system components. This article presents cost ranges in USD

Push local Git repository to new remote including all branches and tags

I have a local Git repository that I would like to push to a new remote repository (brand new repository set up on Beanstalk, if that matters). My local repository has a few branches and tags, and I



[Move the most recent commit \(s\) to a new branch with Git](#)

A graphical version manager where you would just add a tag for the new branch without dealing

with what seems to me obscure and archaic syntax would be such a relief. My kingdom and

Commercial Battery Storage Costs

From a manufacturer's perspective, the final price tag is a sum of high-quality components, advanced engineering, and essential services, all



[Difference between 'new operator' and 'operator new'?](#)

A new expression is the whole phrase that begins with new. So what do you call just the "new" part of it? If it's wrong to call that the new operator, then we should not call "sizeof" the sizeof

[The Real Cost of Commercial Battery Energy Storage](#)

What factors influence the cost of commercial battery energy storage systems? Key factors influencing the cost include battery chemistry, system



What is the 'new' keyword in JavaScript?

The new keyword in JavaScript can be quite confusing when it is first encountered, as people tend to think that JavaScript is not an object-oriented programming language. What is it? What problems

[Battery Storage Cost Per KWh 2026 - Well Built Florida](#)

The main cost drivers are battery chemistry, system size, installation complexity, and regional incentives. This article provides practical pricing ranges in USD with clear low-average-high

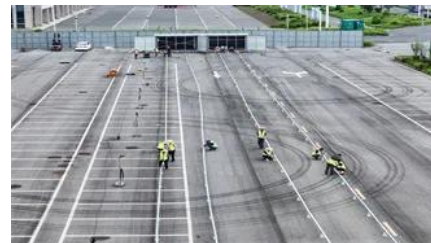


[Battery Energy Storage Cabinet Cost: A 2025 Breakdown for](#)

Whether you're powering a factory or stabilizing a solar farm, understanding these costs is like knowing the secret recipe to your grandma's famous pie. We'll break down the ingredients

[How does the new operator work in JavaScript?](#)

The new operator uses the internal [] method, and it basically does the following: Initializes a new native object Sets the internal [] of this object, pointing to the Function prototype



[New Energy Storage Charging Cabinet Price List: 2024 Cost Guide](#)

Wondering how much a modern energy storage charging cabinet costs? This comprehensive guide breaks down pricing factors, industry benchmarks, and emerging trends for commercial and industrial

[Cost Projections for Utility-Scale Battery Storage: 2025 Update](#)

In this work we describe the development of cost and performance projections for utility-scale lithium-ion battery systems, with a focus on 4-hour duration systems. The projections are developed from an





[Battery Energy Storage System Cost Overview - One and Done Prep](#)

Readers typically pay for a Battery Energy Storage System (BESS) based on capacity, chemistry, and installation complexity. Main cost drivers include the system size, inverter type,

[How do I push a new local branch to a remote Git repository and track](#)

How do I: Create a local branch from another branch (via git branch or git checkout -b). Push the local branch to the remote repository (i.e. publish), but make it trackable so that git pull and



Contact Us

For off-grid system quotes, technical support, or partnerships, please visit:
<https://kephamatraining.co.za>