

Maintenance of 50kWh Modular Battery Cabinet for Mining



Overview

This manual contains important instructions that should be followed during installation of Vertiv™ Liebert® APM2 Modular External Battery Cabinet (EBC) and accessories.

Maintenance of 50kWh Modular Battery Cabinet for Mining



[IEC 61511 Safety Bypass and Override , SIS Maintenance Guide](#)

IEC 61511 Safety Bypass and Override Why Safety Bypass And Override Matter For Instrumentation Maintenance Safety bypass and override activities are among the most critical and

[VxRail: Entering ESXi Host Maintenance Mode with vSAN File](#)

This KB aims to explain how to put the ESXi host in Maintenance Mode (MM) when vSAN File Service is enabled on the VxRail Cluster.



[Why is it spelled "maintenance" and not "maintainance?"](#)

Why is the task of maintaining spelled "maintenance" and not "maintainance?" Other words related to maintaining include: maintain, maintained, maintainer, maintainability, and

Proactive Maintenance for PLC I/O Modules

Learn proactive maintenance strategies for PLC I/O modules to prevent failures, cut downtime, boost reliability, and ensure industrial safety.



[How to Clean and Maintain Your Dell](#)



[Computer](#)

Learn how to clean and maintain your Dell laptop or desktop. Get step-by-step instructions for cleaning, driver updates, antivirus scans, and data backup.

[Advanced Field Instrument Reliability & Cyber-Secure Maintenance](#)

A complete 2025 guide for smart instrumentation reliability, predictive diagnostics, digital protocols, IIoT integration, and cyber-secure maintenance checklists.

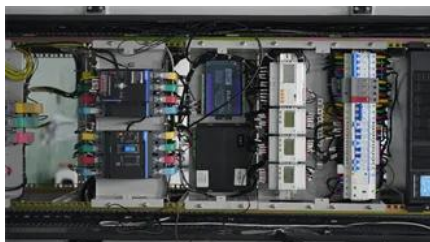


[SOLIS PRIMEPOWER-109KWH-50KW-NV USER MANUAL Pdf](#)

Page 7: Manual Description 1. Manual Description Scope of Application 1.1. This manual is applicable to the PrimePower-109kWh-50kW-NV integrated energy storage cabinet. Hereinafter referred to as

[Top 10 Essential Maintenance Metrics Every](#)

This article explains 10 key maintenance metrics to boost uptime, reliability, and performance using CMMS and SAP PM.



[What is maintenance? Types of Maintenance](#)

What is maintenance? Maintenance, a fundamental concept in various sectors, plays a pivotal role in ensuring the smooth operation and longevity of devices, equipment, machinery, and

PC Diagnostics , Dell US

PC Diagnostics Run a quick test or other assessments on your system



SL-71373_Liebert(R) APM2 Modular EBC_REVA

Internal battery strapping must be verified prior to moving a battery cabinet (after initial installation). Battery cabinets contain non-spillable batteries. Keep units upright. Do not stack. Do not tilt. Failure

UBC80 Battery Cabinet Installation, Operation, & Maintenance

Whether the Battery Cabinet is empty or partially assembled, it should be located, mounted and properly grounded prior to final assembly as instructed in this manual in sections 6.2.1, 6.2.2 and 6.2.3



PowerStore: Maintenance Window is automatically enabled for

The maintenance Window (managing Support Notifications) setting is automatically enabled to stop alert notifications when a node or appliance is manually rebooted or shutdown.

Contact Us

For off-grid system quotes, technical support, or partnerships, please visit:
<https://kephamatraining.co.za>