

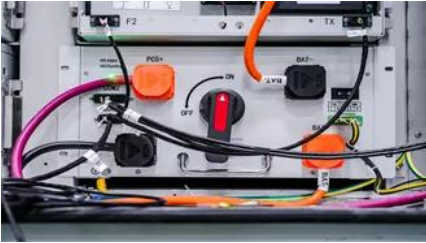
How to match lithium circuit lamp with photovoltaic panel



Overview

This guide explores the key considerations for pairing lithium batteries with solar panels, providing insights into how these two technologies work together and how to make the most of this dynamic duo.

How to match lithium circuit lamp with photovoltaic panel



[How to Connect Solar Panels to Batteries: A Step by](#)

Learn the step-by-step process to safely and efficiently connect solar panels to batteries, ensuring optimal energy storage and performance for your

[Regular expression to match string starting with a specific word](#)

How do I create a regular expression to match a word at the beginning of a string? We are looking to match stop at the beginning of a string and anything can follow it. For example, the



[Match everything except for specified strings](#)

I know that the following regex will match "red", "green", or "blue". red,green,blue Is there a straightforward way of making it match everything except several specified strings?

[Wiring solar panels, charge controller and battery together](#)

Service panel power source directory - "CAUTION: MULTIPLE SOURCES OF POWER"



[Pairing a Lithium Battery Charger with Solar](#)



Getting the correct match ensures you're making the most of every bit of energy your

[How to match "any character" in regular expression?](#)

You may also sometimes need to match newlines in Java regexes in contexts where you cannot pass Pattern.DOTALL, such as when doing a multi-line regex search in Eclipse, or as a user



Python: match/case by type of value

You can match directly against the type of v, but you need a value pattern to refer to the types to match, as a "dotless" name is a capture pattern that matches any value.

[The Perfect Match Between Lithium Batteries and Solar Panels](#)

This guide explores the key considerations for pairing lithium batteries with solar



[How to Match Home Appliances with Photovoltaic Panels and Light](#)

Ever wondered why your photovoltaic panels aren't cutting your energy bill as much as you'd hoped?

regex

This MATLAB function returns the starting index of each substring of str that matches the character patterns specified by the regular expression.



[RegEx match open tags except XHTML self-contained tags](#)

The tag to match may end with a simple ">" symbol, or a possible XHTML closure, which makes use of the slash before it: (/>, >). The slash is, of course, escaped since it coincides with the regular

[Match case statement with multiple 'or' conditions in each case](#)

Match case statement with multiple 'or' conditions in each case Asked 3 years, 4 months ago Modified 1 month ago Viewed 39k times



[Regular expression to match a word or its prefix](#)

I want to match a regular expression on a whole word. In the following example I am trying to match s or season but what I have matches s, e, a, o and n. [s,season] How do I make a

[How to Connect Solar Panels to Battery: Complete](#)

Learn how to safely connect solar panels to batteries with our expert step-by-step guide. Includes wiring diagrams, safety tips, and troubleshooting





How To Connect Solar Panels To Battery

Regardless of which solar charge controller you have, connecting a solar panel to it is pretty straightforward. All you have to do is match the positive

[Regular expression to match a line that doesn't contain a word](#)

I know it's possible to match a word and then reverse the matches using other tools (e.g. grep -v). However, is it possible to match lines that do not contain a specific word, e.g. hede, using a



[How to Connect a Solar Panel to a Lithium Battery: A Step-by-Step](#)

Discover how to seamlessly connect a solar panel to a lithium battery for a



[Regular expression to match characters at beginning of line only](#)

Regex symbol to match at beginning of a line: ^
Add the string you're searching for (CTR) to the regex like this: ^CTR Example: regex That should be enough! However, if you need to get the



Contact Us

For off-grid system quotes, technical support, or partnerships, please visit:
<https://kephamatraining.co.za>