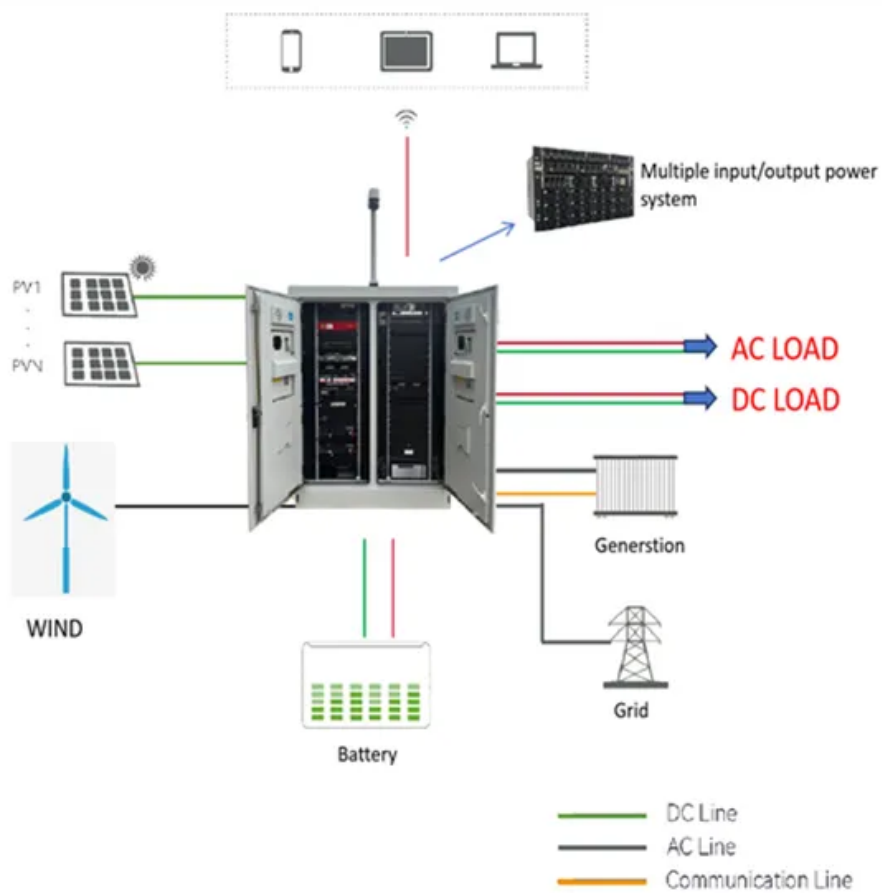


How to maintain the diagonal when installing photovoltaic panels



Overview

The solar panel's best angle determines how much sunlight your panels capture throughout the year, directly impacting energy production and ROI. A correctly tilted system can improve efficiency by 5-10% annually, reducing payback time and boosting long-term savings.

How to maintain the diagonal when installing photovoltaic panels



[Solar Panel Best Angle , Tilt & Orientation Guide 2025](#)

In this guide, we'll break down the science behind the best solar panel angle, explain how to calculate it based on latitude, show seasonal adjustments, and share competitor-winning insights

[Solar Panel Direction & Orientation: 2025 Complete Guide](#)

Whether you're planning a new installation or optimizing an existing system, understanding solar panel direction and orientation is crucial for maximizing your system's efficiency



[Optimal Orientation for Solar Panels: Landscape vs. Portrait](#)

To maximize energy generation, panels must be positioned at the right angle and direction based on location and weather data. Optimal power is harnessed when sunlight hits perpendicularly.

[DIY Solar Panel Installation: Step by Step Guide](#)

This DIY solar panel installation guide provides an overview of the requirements and steps necessary to successfully bring your solar project to fruition. From planning and permitting to interconnection and



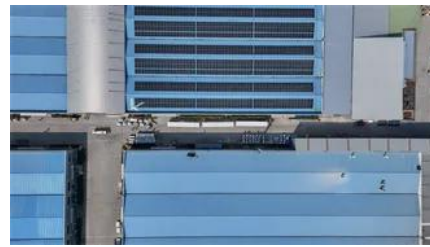


[What's the Best Angle for Solar Panels? , EnergySage](#)

Below, we'll get into the finer details of the ideal direction and angle for solar panels, how it varies depending on where you live, and what it takes to truly optimize your panels' electricity output.

[Best Angle for Solar Panels: It's Not Your Latitude](#)

Learn how to get the best angle for solar panels for your location, or calculate your optimal solar panel tilt angle with our free calculator.



[What's the Best Angle for Solar Panels to Get Maximum Output?](#)

Learn how to calculate the best tilt angle for home solar panels in 2026. Includes seasonal adjustments, PVWatts guidance and energy optimization tips for maximum output.

[What's the Best Angle for Solar Panels? , EnergySage](#)

Below, we'll get into the finer details of the ideal direction and



Solar Panel Tilt Angle Calculator

Scroll to the top of this page to use our Solar Panel Tilt Angle Calculator. Simply enter your address and it will provide the optimal angles for each season, as well as a year-round average angle for your

[Best Angle for Solar Panels: It's Not Your Latitude](#)

Calculate The Best Solar Panel Angle For Your Location
What's The Best Angle For Solar Panels?
Best Solar Panel Angle by Zip Code
What's The Best Direction For Solar Panels?
But first: If you don't want to bother with all the technical details, you can just use our solar panel tilt angle calculator to calculate the best solar panel angle for your location or zip code. See more on footprinthero
Fluke Corporation



A Guide to Photovoltaic Systems Installation: From

This article walks you through the basics of PV system installation, focusing on the practical steps from mounting modules to connecting the inverter to the



[A Guide to Photovoltaic Systems Installation: From Setup to](#)

This article walks you through the basics of PV system installation, focusing on the practical steps from mounting modules to connecting the inverter to the electrical grid, and emphasizes the importance of

Complete Solar Panel Installation Guide

Learn the essential steps for solar panel installation, including site assessment, permits, and safety tips for a successful setup.



Contact Us

For off-grid system quotes, technical support, or partnerships, please visit:
<https://kephamatraining.co.za>