

# How to identify the positive and negative lines of photovoltaic panels



## Overview

---

You can identify the positive and negative terminals on a solar panel by checking for visual markings like '+' and '-' symbols, colored wires (typically red for positive, black for negative), using a multimeter to measure voltage, and consulting the manufacturer's documentation.

## How to identify the positive and negative lines of photovoltaic panels

---

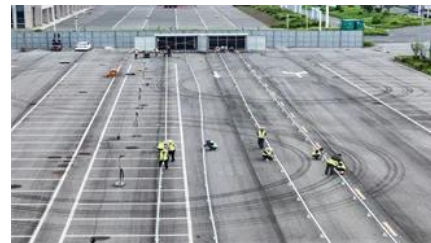


### [Which Side of Photovoltaic Glass Is the Positive Side: A Technical](#)

When installing solar panels, identifying the positive side of photovoltaic glass is as crucial as knowing which wire goes where in a battery. Just like mismatched wires can short-circuit a device, incorrect

### [Solar Panel Positive and Negative \(Diode + Voltmeter\)](#)

In this article, you will learn how to determine the positive and negative terminals of a solar panel. We will also show you how to check solar panel polarity, and how to connect a solar



### [How to distinguish positive and negative poles in photovoltaic panels](#)

How to distinguish positive and negative poles in photovoltaic panels Know how to identify positive solar panel connectors with this step-by-step guide. From using markings and coloring to testing

### [How to identify positive and negative terminals on a solar panel?](#)

You can identify the positive and negative terminals on a solar panel by checking for visual markings like '+' and '-' symbols, colored wires (typically red for positive, black for negative), using a multimeter to





### [How to check the positive and negative of solar panel wiring](#)

To check the positive and negative of solar panel wiring, follow these steps clearly: 1. Identify the terminals correctly, 2. Use a multimeter for proper measurements, 3. Observe polarity

### **How to Identify the Positive and Negative Lines of Photovoltaic Panels**

Identifying photovoltaic panel polarity is the electrical equivalent of reading hieroglyphics for many beginners. But fear not - today we'll turn you into a solar Sherlock, complete with multimeter



### [How to identify positive and negative solar panel polarity](#)

If you connect the positive and negative terminals incorrectly, you'll face reduced efficiency, potential equipment damage, or even safety hazards. Let's break down the most reliable methods to identify

### [Solar Panel Positive and Negative \(Diode + Voltmeter\)](#)

To prevent this, ensure all PV modules have correct wiring in terms of positive/negative polarities. Refer back to step one and identify which wire corresponds to positive voltage.



### [How do you know if a solar panel is positive or negative](#)



If the number displayed on the screen is positive, such as "38.5" or "+38.5", this directly declares: the wire touched by the red probe is the positive pole (+), and the wire touched by the

### How to Check Solar Panel Polarity (Reverses + Fixes)

To prevent this, ensure all PV modules have correct wiring in terms of positive/negative polarities. Refer back to step one and identify which wire corresponds to positive voltage.



### **How to Check Solar Panel Polarity**

Polarity relates to the positive and negative terminals of the panel. Accurately recognizing this polarity during the connection of solar panels is crucial to ensure their optimal

## **Contact Us**

---

For off-grid system quotes, technical support, or partnerships, please visit:  
<https://kephamatraining.co.za>