

How to connect the battery cabinet battery



Overview

Connect the battery cable accessory to one end of the battery port on the rear panel of the UPS and connect the other end to any battery port on the rear panel of the EBC. Make sure they are in parallel.

How to connect the battery cabinet battery



Eaton Top Wiring Kit for Type S Battery Cabinet installation instructions

The manuals listed in the Reference Documents section contain important instructions that should be followed during installation and maintenance of the UPS system, top wiring kit, and Type S lithium

[External Battery BP24V15RT2U Installation Guide](#)

External Battery Installation module for extending the runtime of the UPS. The external battery connection is not isolated and is to be performed by qualified service personnel knowledgeable about



[/15/20KVA UPS Battery Cabinet Installation and Operation Manual](#)

Connection to the Vanguard External Battery shall be made by qualified SERVICE PERSONNEL only. Installation or replacement of batteries must be located in a SERVICE ACCESS AREA: The service



[-48 VDC Battery Cabinet Installation and User Manual \(Section](#)

Connect the power system's battery cable terminated in an Anderson connector to the first battery cabinet's battery cable terminated in a mating Anderson connector.





[Position and Interconnect the Battery Cabinets](#)

NOTE: This procedure describes how to position and interconnect several battery cabinets. If your system only has one battery cabinet, you only need to follow step 2 and step 3.

[ResiPOWER RA Battery Bank Installation User's Manual](#)

Read all safety, installation and operating instructions before installing the Battery Bank. This manual contains important instructions that should be followed during installation and maintenance of the



[Vertiv Liebert EXM External Battery Cabinet User Manual](#)

View and Download Vertiv Liebert EXM External Battery Cabinet user manual online. Liebert EXM External Battery Cabinet chassis pdf manual download.

[SolaHD S4K-D External Battery Cabinet QIG Manual PDF](#)

Connect the battery cable accessory to one end of the battery port on the rear panel of the UPS and connect the other end to any battery port on the rear panel of the EBC.



[Vertiv Liebert EXM 208 Volt External Battery Cabinet User Manual](#)

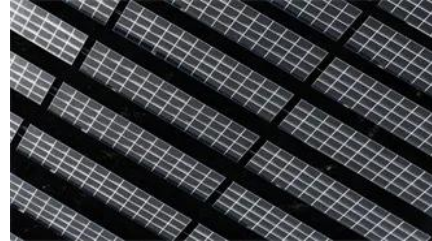
Below you will find brief information for EXM



External Battery Cabinet. This manual provides comprehensive instructions for the mechanical and battery installation of the Liebert EXM External

[UBC80 Battery Cabinet Installation, Operation, & Maintenance](#)

Install the main POS and NEG cables from the output circuit breaker to the correct battery posts on the designated battery units shown in the provided battery system schematic.



Contact Us

For off-grid system quotes, technical support, or partnerships, please visit:
<https://kephamatraining.co.za>