

How much is the normal weight of a photovoltaic panel



How much is the normal weight of a photovoltaic panel



MUCH , English meaning

MUCH definition: 1. a large amount or to a large degree: 2. a far larger amount of something than you want or need. Learn more.

[MUCH definition and meaning , Collins English Dictionary](#)

You use much to indicate the great intensity, extent, or degree of something such as an action, feeling, or change. Much is usually used with 'so', 'too', and 'very', and in negative clauses with this meaning.

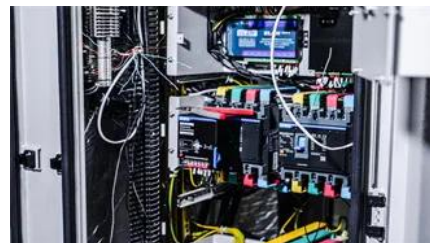


[How Much Does a Solar Panel Weigh? Solar Panel](#)

The residential solar panel consists of 60 solar cells, and the average weight of the panels is about 40 lbs. (18.14 kg). While this varies by

[The Ultimate Guide to Solar Panel Size, Weight](#)

Standard residential solar panels are typically around 5.8 feet long by 3.5 feet wide and weigh between 40 to 50 pounds. However, the exact



[How Much Do Solar Panels Weigh? A Complete Guide](#)

In general, residential solar panels can weigh as



low as 35 lbs (kg) and as high as 50 lbs (in kg). On average, most residential solar panels weigh

How Much Do Solar Panels Weigh?

The average weight for a residential solar panel is around 40 pounds. They are approximately 5.4 feet long and 3.25 feet wide, which works out to about 2.3



What does much mean?

Much is an adjective that refers to a large quantity, amount, or degree of something. It indicates a substantial extent or level of something, generally implying a significant or notable difference or

MUCH Definition & Meaning

The meaning of MUCH is great in quantity, amount, extent, or degree. How to use much in a sentence.



Solar Panel Size and Weight: a Guide

On average, solar panels weigh anywhere from 34 to 62 pounds, depending on size and material. Today most solar panels are encased in a

[Solar Panel Size and Weight: How Big Are Solar Panels?](#)

Solar panels generate clean energy and significant savings, but they aren't a one-size-fits-all solution. The size and weight of solar panels vary



[Solar Panel Size and Weight: A 2026 Guide \(with](#)

Average Residential Panel Weight: Most panels weigh between ****40 and 50 pounds****. The "Bridge" (Total Roof Load): A standard 20-panel residential

[What's the Average Solar Panel Size and Weight?](#)

A typical home solar panel is 65 inches by 39 inches, or 5.5 feet by 3.25 feet, and weighs about 42 pounds. Panels may vary



[Solar Panel Size And Weight: A Comprehensive Guide](#)

When considering residential solar panels, typical configurations consist of 60 cells measuring approximately 3.25 feet by 5.5 feet. These panels cover an area of

[average photovoltaic solar panel weight guide](#)

What is the average photovoltaic solar panel weight I should expect? Generally, standard residential photovoltaic panels weigh between 40 and 50





[Much Definition & Meaning , YourDictionary](#)

Much definition: Great in quantity, degree, or extent.

Contact Us

For off-grid system quotes, technical support, or partnerships, please visit:
<https://kephamatraining.co.za>