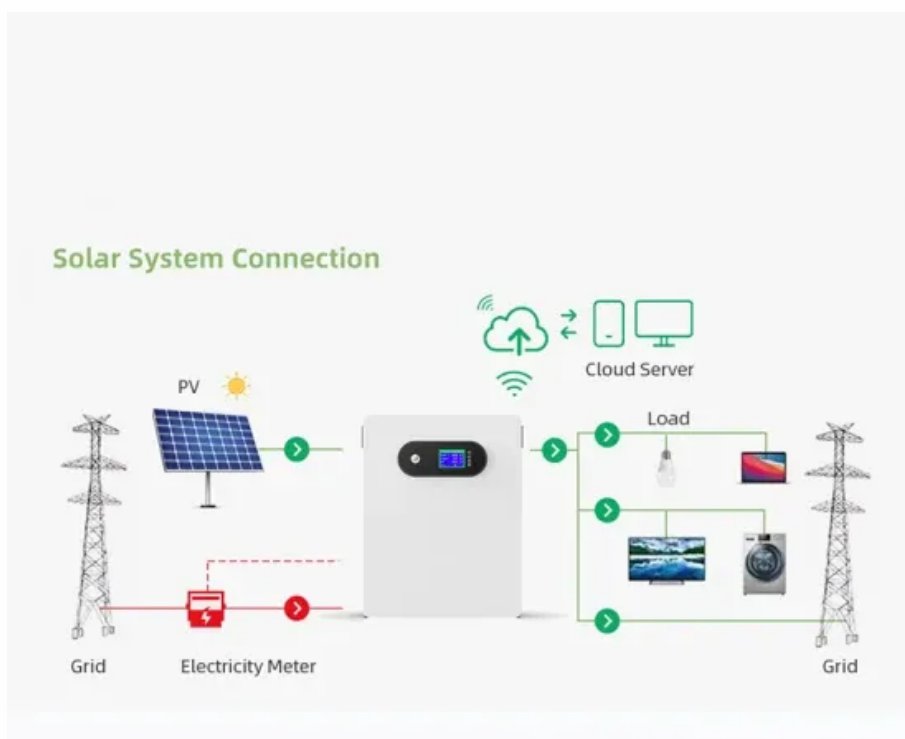


How much can the photovoltaic panel extend beyond the bracket



Overview

Rigid panels typically require full perimeter support or mid-span bracing to prevent flexing, while flexible panels may tolerate 25-40% unsupported areas. Ballasted systems without roof penetrations often allow 15-30% overhang beyond mounting points, but wind/snow loads critically.

How much can the photovoltaic panel extend beyond the bracket

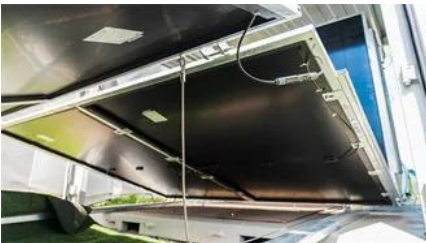


Can solar panels extend past roof?

In some cases, extending solar panels slightly beyond the roof edge might be feasible and beneficial. For instance, a small overhang can help maximize the efficiency of the solar panels

[Do rails typically extend beyond panels? : r/solar](#)

Do rails typically extend beyond panels? No. Or at least not more than 1-2" max, just enough to install an end clamp.



[The Ultimate Solar Panel Mount Calculator: How To Optimize Your](#)

Planning a solar installation is a complex puzzle. You're balancing panel efficiency, roof integrity, labor costs, and project timelines. One of the most critical, yet often underestimated, pieces

[Violating Solar Panel Exclusion Zones: The Pragmatist's Guide](#)

Conservative solar installers say no part of any solar panel shall ever encroach on a roof's exclusion zone. Pragmatic installers may differ.



[Step 6 \(Simplified\): Review Structural PV Array Mounting Requirements](#)

The structural requirements for mounting a PV



How Much Of A Solar Panel Can Be Unsupported?

The maximum unsupported portion of a solar panel depends on its mounting system and structural design. Rigid panels typically require full perimeter support or mid-span bracing to prevent

array on a residential rooftop that are presented in this section are consistent with the approach taken by SolarAPP+.



Mounting Solar Modules and Estimating Parts

To estimate total rail size, simply multiply the module width (if in portrait, or the module length if in landscape) by the number of modules in a row. Then add one inch between each module and two

Solar panels on a roof without a ridge

The size of the path along the ridge depends on how much of the roof is covered in PV panels. For roofs where PV panels cover up to 33% of the total area in plan view (essentially, as



Panel overhang past roof edge

On carport canopies they typically allow up to 1/3 of the length of the panel, but it depends on the manufacturer of the panel. You need to ask them but basically, where ever the

[Solar Panel Size & Dimensions Guide 2025 , Complete Specs](#)

In this comprehensive guide, you'll learn everything you need to know about solar panel sizing, from standard dimensions to weight considerations, helping you determine the perfect solar



Contact Us

For off-grid system quotes, technical support, or partnerships, please visit:
<https://kephamatraining.co.za>