

# How many meters are the blades for wind power generation



## Overview

---

According to The United States Department of Energy, most modern land-based wind turbines have blades of over 170 feet (52 meters). This means that their total rotor diameter is longer than a football field.

## How many meters are the blades for wind power generation

---



### Search

Search with Microsoft Bing and use the power of AI to find information, explore webpages, images, videos, maps, and more. A smart search engine for the forever curious.

### Bing Related Searches: Usage Analysis

While Bing may never catch up to Google in search engine market share, it has the upper hand when it comes to Related Searches usage. The difference is placement: top-left (where users naturally scan)

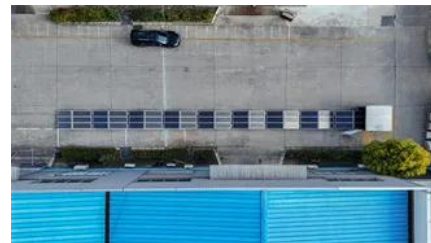


### How a Wind Turbine Works

Turbine blades vary in size, but a typical modern land-based wind turbine has blades of over 170 feet (52 meters). The largest turbine is GE's Haliade-X

### [How Long Are the Blades on Wind Turbines?](#)

Onshore wind turbine blades typically range from 40 to 80 meters (131 to 262 feet). However, this range can vary depending on the specific turbine model and the characteristics of the



### [Bing Search Testing Zoomable & Sticky Related Searches](#)



Microsoft is testing zoomable and sticky related searches in the Bing Search results page. So one variation has the related searches stick to the right top of the screen as you scroll and the

## MANY Definition & Meaning

The meaning of MANY is consisting of or amounting to a large but indefinite number. How to use many in a sentence.



## [How Long Are Windmill Blades? Discover the Scale of](#)

Research is exploring theoretical blade lengths of up to 200 meters to further enhance efficiency and energy output. Larger blades significantly

## Microsoft Bing , Get to know Bing

Copilot Search in Bing gives you quick, summarized answers with cited sources and suggestions for further exploration, making it easier than ever to discover more.



## [How Long Are Wind Turbine Blades? Factors & Size Explained](#)

The length of wind turbine blades varies considerably, depending on whether they are intended for onshore or offshore installations and their power capacity. Modern onshore wind

## [Bing Search Guide: History, AI Features, and SEO Tips](#)

Learn everything you need to know about Bing search, including its history, AI features, and SEO tips.



## MANY Definition & Meaning , Dictionary

MANY definition: constituting or forming a large number; numerous. See examples of many used in a sentence.

## How Big Are The Blades On A Wind Turbine

The United States Department of Energy reports that most modern land-based wind turbines have blades of over 170 feet (52 meters), resulting in a total rotor diameter longer than a



## Many: Definition, Meaning, and Examples

Explore the definition of the word "many," as well as its versatile usage, synonyms, examples, etymology, and more.

## How To See All Bing Related Searches

Bing's SERPs surface related searches in multiple locations, each revealing slightly different layers of search intent. When combined, these native features give you a surprisingly deep



## [How Long Are Wind Turbine Blades?](#)



## many determiner

Definition of many determiner in Oxford Advanced Learner's Dictionary. Meaning, pronunciation, picture, example sentences, grammar, usage notes, synonyms and more.

## [Sizes, Materials](#)

A modern onshore turbine now swings fiberglass blades averaging 70-85 m, while the latest offshore prototypes stretch past 115 m.



## [MANY definition and meaning , Collins English Dictionary](#)

You use many to indicate that you are talking about a large number of people or things. I don't think many people would argue with that. Not many films are made in Finland. Do you keep many books

## [How Long are Wind Turbine Blades? \(Answer Might](#)

Wind turbine blades range from under 1 meter to 107 meters (under 3 to 351 feet) long. For example, the world's largest turbine, GE's Haliade-X



## **How to See All Bing Related Searches**

Navigate to Bing's search options and verify configurations related to search suggestions and related searches. By systematically addressing these common issues, you can improve your

## Introducing Bing generative search

This new experience combines the foundation of Bing's search results with the power of large and small language models (LLMs and SLMs). It understands the search query, reviews



## [Wind Turbine Blade Size: How Big Are They and Why?](#)

According to The United States Department of Energy, most modern land-based wind turbines have blades of over 170 feet (52 meters). This means

## Many Definition & Meaning

Many definition: Amounting to or consisting of a large indefinite number.



## [The next step in Bing generative search, Bing Search Blog](#)

In July, we introduced an early view of generative search in Bing, and today we're taking the next step as we continue to evolve our vision of the future of search.

## [What Are The Dimensions of a Wind Turbine?](#)

The wind turbine blades are the elongated objects protruding from the center of the motor. They are anywhere from 50 meters to 120 meters (164



## **MANY , English meaning**



### [Bing Tests New Labels for Related Searches Feature](#)

Bing Tests Headers: Experimenting with new titles like "Get detailed results" and "What others are searching for" to replace standard "Related Searches". Boosts User Engagement: Action

We use the quantifiers much, many, a lot of, lots of to talk about quantities, amounts and degree. We can use them with a noun (as a determiner) or without a noun (as a pronoun).



### **How Long are Wind Turbine Blades?**

For example, the largest wind turbine in production (GE Haliade-X, 14 MW) has 107 meter blades that are 80% of its tower height. These blades are

## **Contact Us**

---

For off-grid system quotes, technical support, or partnerships, please visit:  
<https://kephamatraining.co.za>