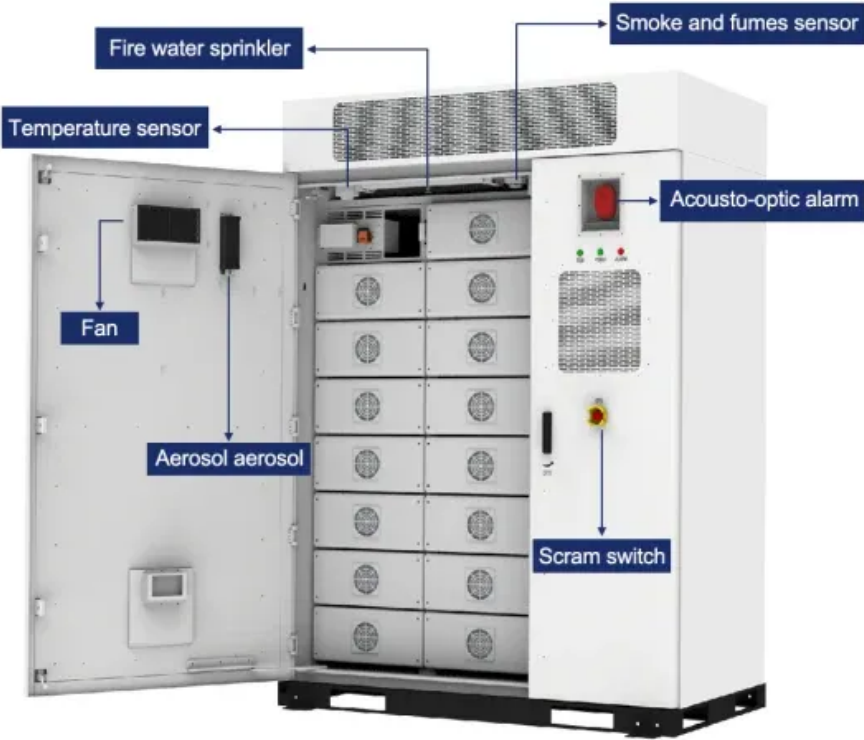
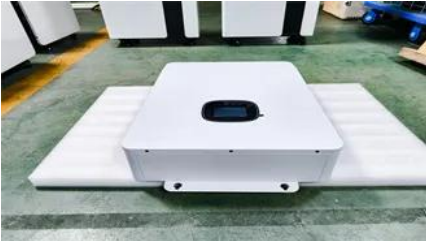


# Distributed energy storage user cabinet 80kWh



## Distributed energy storage user cabinet 80kWh

---



### DistributedCOM Error. Solved

Distributed Component Object Model (DCOM) is a proprietary Microsoft technology for communication between software components on networked computers. DCOM, which originally

### [80KWh?100KWh ?120KWh battery cabinet.customized high voltage](#)

High voltage 120 KWh battery cabinet This is high voltage storage battery for all applications suitable for systems with flexible modular system and parallel connection.



### [Industrial ESS Cabinet 80kWh 100kWh 200kWh 51.2V 280Ah Lifepo4](#)

SKTESS100 is a DC battery cabinet designed for outdoor installation, featuring intelligent air cooling for efficient heat dissipation. Paired with a wall-mounted hybrid inverter, it delivers stable and reliable AC

### High Voltage Mini C&I ESS

The 80kVA / 261kWh liquid-cooled high-voltage cabinet is a compact yet powerful mini commercial and industrial energy storage system (C&I ESS) engineered to



### DistributedCOM permission settings



## Event ID 10016, DistributedCOM

Hi @ parsonm To solve COM errors, if you don't follow the Microsoft note, get a cli utility by Microsoft called dcomperm. Its source code is included with the Microsoft Windows SDK for



## [30kW 80kWh Outdoor Energy Storage System for Reliable Power](#)

With 80kWh of usable capacity and wide PV/DC input support, it's ideal for commercial sites looking to store solar energy, shift peak loads, or provide backup protection in harsh outdoor environments.



## Error 10016 -should I resolve this?

Inside W10's Event Viewer, I see an error with ID of 10016 (DistributedCOM). Its error description is - The application-specific permission settings d



## Event ID 10016, DistributedCOM

Also, the outcome is that, under normal conditions, the Microsoft Distributed Transaction Coordinator (MSDTC) service establishes a secure connection with the local System (Computer), not



## [Sunrange 80kwh 107kwh Lithium Battery Cabinet Outdoor Bess](#)

We provide different design solutions for large, medium and small customers. We continue to develop and improve technology to bring a better experience to our users.

## DistributedCOM Event ID 10000

What should I do? Log Name: SystemSource: Microsoft-Windows-DistributedCOMDate: 4/27/2020 4:26:30 PMEvent ID: 10000Task Category: NoneLevel: ErrorKeywords: ClassicUser: SAM



## [GSL Energy High-Voltage Battery Cabinet GSL](#)

Ideal for home, commercial, and utility backup power, this modern system

## IQ Vault 80 (120Y/208 V) , Enphase

Fully integrated, AC-coupled commercial energy storage system shipped completely assembled to eliminate internal wiring and module installation. Modular 80 kWh building blocks that scale



## [Store apps close immediately, Event 10010 with DistributedCOM](#)

Update: Just came back from re-installing and re-registering all Windows Store Apps (even the Store itself I noticed) and still having the same issue. Did a reboot just in case after

## Need Help with DistributedCOM 10010

In this video, i will guide you on how to fix DistributedCOM Event ID 10016 error in Windows 10 and Windows 11.



## [80 KWH ENERGY STORAGE CABINET ,](#)



## ZAWOJE POWER

South tarawa integrated energy storage cabinet hybrid Does South Tarawa need solar power?Constrained renewable energy development and lack of private sector participation. While

## Windows 10 Event ID 10010 and 10016 Errors With DistributedCOM

I am having a number of events that seem to be located repeatedly with the source: DistributedCOM Event ID: 10010 and Event ID: 10016 also getting rep



## **DistributedCOM Error. Solved**

What u did by deleting all entries in the registry for GUID {1B562E86-B7AA-4131-BADC-B6F3A001407E} in the eventlog is it not the same as what Vaio 7 did by setting 0 to the dword to

## Do I need "Distributed Link Tracking Client"?

Do I need "Distributed Link Tracking Client"? Read up on it, cant quite make it out if it's to my disadvantage (and how) in every day Computer life if I have it disabled.



## **Contact Us**

---

For off-grid system quotes, technical support, or partnerships, please visit:  
<https://kephamatraining.co.za>