

Current measurement range of each photovoltaic panel



Overview

In this guide, we'll walk you through how to measure solar panel output current with a multimeter, how to calculate power (watts), and what limitations to keep in mind.

Current measurement range of each photovoltaic panel



[Current measurement range of each photovoltaic panel](#)

Adjust the tilt angle of your solar panel until you find the max current reading and compare this number to the short circuit current (Isc) listed on the back of your panel.

[Solar Panel Ratings Explained - Wattage, Current, Voltage, and](#)

There are several terms associated with a solar panel and their ratings such as nominal voltage, the voltage at open circuit (Voc), the voltage at



[How to Measure Solar Panel Output Current with digital](#)

In this guide, we'll walk you through how to measure solar panel output current with a multimeter, how to calculate power (watts), and what limitations to keep in mind.

[Understanding the Voltage - Current \(I-V\) Curve of a](#)

The I-V curve contains three significant points: Maximum Power Point, MPP (representing both V_{mpp} and I_{mpp}), the Open Circuit Voltage (Voc),



Power Measurement of

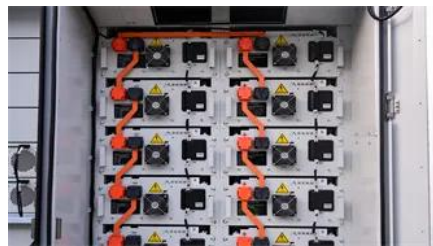
Here is a table of data from a set of



measurement on 3 large solar panels connected in series. In this example power resistors of 100, 50, 25 and 3 ohms

[Understanding Solar Panel Voltage and Current Output](#)

Decode solar panels specifications to safely connect your panels to power station or charge controller. This quick guide unlocks full solar potential.



[Understanding Solar Panel Specifications: Voltage, Current, and Power Ratings](#)

Discover essential solar panel specifications for optimal performance. Learn about voltage, current, and power ratings to make informed

[Standard Test Conditions \(STC\) of a Photovoltaic Panel](#)

The standard test conditions, or STC of a photovoltaic solar panel is used by a manufacturer as a way to define the electrical performance and



AT&T Community Forums

AT&T Community Forums

[Systematic review of the data acquisition and monitoring systems of](#)

Current sensors can measure various independent values such as line current at inverter output, line current of the grid, and current value at PV module levels.



Contact Us

For off-grid system quotes, technical support, or partnerships, please visit:
<https://kephamatraining.co.za>