

Communication equipment base station type



Communication equipment base station type



[The Benefits of Effective Communication in the Workplace](#)

Effective communication goes beyond simply sharing information - it is the backbone of relationships, collaboration, and leadership. The benefits of effective communication include building

UCLA Communication

Our work covers many areas including interpersonal communication and cognition, human-computer interaction, evolution and human behavior, artificial intelligence and computational modeling, mass



[What is a Base Station? - From Communication Core to Thermal](#)

Simply put, a base station (BS) is a wireless transceiver device in a mobile communication network that provides wireless coverage and communicates with mobile terminals

[Chapter 1: Introduction to Communication - Keys to Communication:](#)

In the following section, we discuss some of the essential elements that make up communication, introduce three models of the communication process, and discuss the four primary forms of





[What Is a Base Station? Definition and How It Works](#)

A base station is a fixed transceiver that serves as the central communication point for mobile devices within a defined geographical area, known as a cell. It is sometimes called a cell tower.

[What Is Communication? How to Use It Effectively](#)

Communication is sharing messages through words, signs, and more to create and exchange meaning. Feedback is a key part of communication, and can be given through words or



Communication

Communication is commonly defined as the transmission of information. Its precise definition is disputed and there are disagreements about whether unintentional or failed transmissions are included and

Types of Base Stations

In this article, we will discuss the different types of base stations with their advantages and applications in the real world. A base station is a component that provides functionality as a gateway



What Is A Base Station?

Base stations play a central role in two-way radio systems, such as citizens band (CB) radio and



ham radio. In these setups, the base station serves as a fixed point of communication,

Understanding Base Stations in Mobile Communication

A base station is a fixed point that enables wireless communication between mobile devices and the network. These stations consist of radio transceivers, antennas, and a controller which facilitate the



Communication , Definition, Types, Examples, & Facts , Britannica

Communication, the exchange of meanings between individuals through a common system of symbols. This article treats the functions, types, and psychology of communication.

What is Communication?

At its foundation, Communication focuses on how people use messages to generate meanings within and across various contexts, and is the discipline that studies all forms, modes, media, and

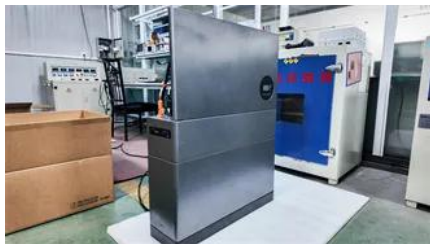


Base station

In the area of wireless computer networking, a base station is a radio receiver/transmitter that serves as the hub of the local wireless network, and may also be the gateway between a wired network and the

[What Is Communication? , Oral Communication](#)

The communication process involves understanding, sharing, and meaning, and it consists of eight essential elements: source, message, channel, receiver, feedback, environment, context, and

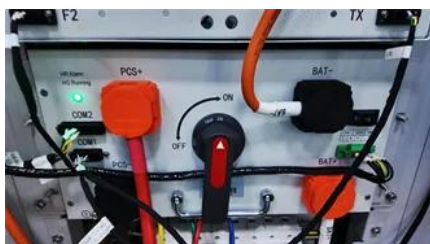


[What are Base Station in Telecommunications?](#)

A base station connects your phone to the network. It acts as a hub between mobile devices and the core system.

[What is Communication: Meaning, Types, Importance and Barriers](#)

Communication is the process of exchange of information, ideas, thoughts, or feelings among individuals or groups. It involves sending and receiving messages through different means, such as verbal,



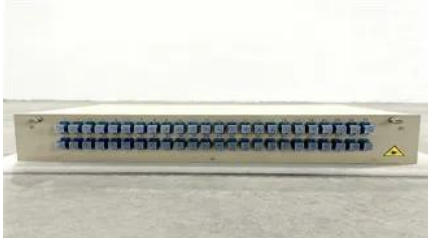
[Types and Applications of Mobile Communication Base Stations](#)

In terms of form, future base stations will develop in three directions: macro base stations with higher performance and integration, micro base stations with smaller size, and more flexible

[Base Stations and Cell Towers: The Pillars of Mobile Connectivity](#)

Base stations use antennas mounted on cell

towers to send and receive radio signals to and from mobile devices within their coverage area. This communication enables users to make



[What Is Effective Communication? Skills for Work, School, and Life](#)

Discover how communication effectiveness and improving your communication skills can benefit your career, education, and life.

4 types of Base stations

Macro cell, Micro cell, Pico cell and Femto cell are 4 types of base stations in wireless communication networks.



Contact Us

For off-grid system quotes, technical support, or partnerships, please visit:
<https://kephamatraining.co.za>