

12v inverter becomes 72v inverter



12v inverter becomes 72v inverter



[how to repair 12v 6000w inverter step by step, common](#)

installation home solar energy storage 12V system, This system is easy!

[How to Fix an Overloaded and Broken 12V Inverter: Causes, Solutions](#)

This guide explains why 12V inverters break down, how to troubleshoot them, and practical steps to avoid costly replacements. Let's dive into real-world solutions backed by industry data.



[Can You Convert a 72V Inverter to 12V Input? A Practical Guide](#)

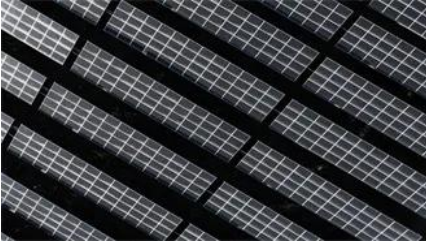
Let's address the burning question first: *Yes, converting a 72V inverter to work with 12V input is technically possible*, but it's not as simple as flipping a switch.

[Power Inverter Problems: 5 Most Frequent Issues and How to Solve](#)

Struggling with inverter problems like overheating or sudden shutdowns? Discover viable fixes to common problems and keep your energy system running smoothly!



[How to Upgrade a 12V Inverter to 72V: A Step-by-Step Guide for High](#)



Meta Description: Learn how to safely convert a 12V inverter to a 72V system for industrial and renewable energy applications. Discover component upgrades, wiring modifications, and efficiency

[Power Inverter Troubleshooting - Common Problems and How](#)

Power inverter troubleshooting can seem daunting, but by understanding common problems and following systematic troubleshooting steps, you can often identify and resolve issues



[12V to 48V/72V Inverters: Powering Modern Energy Solutions Efficiently](#)

Discover how 12V to 48V/72V inverters bridge the gap between low-voltage sources and high-power applications. This guide explores their technical advantages, industry use cases, and emerging

72V Split phase 120-0-120 Inverter?

9PX6KSP has split phase output and has a pack of 6x 12V batteries wired in series for 72V. The pack uses a normal Anderson connector and you can just make your own cable to plug into



[Can a 12V Inverter Work with a 72V Battery? Compatibility Explained](#)

While 12V inverters can't directly use 72V batteries, modern conversion technologies enable safe, efficient integration. Proper voltage matching ensures system longevity and maximizes energy

[Overloaded cigarette lighter port with power inverter, no fuse to](#)

Today I plugged in a power inverter into the cigarette lighter port in the center console (only checked the owner's manual later and saw that's supposed to be not permitted).



Contact Us

For off-grid system quotes, technical support, or partnerships, please visit:
<https://kephamatraining.co.za>